

"To seamen, a ship becomes endowed with human virtues and human faults; she ceases to be a mere inanimate thing." But, remember that man has endowed her with these qualities. That is why "Men Fight, not ships!"

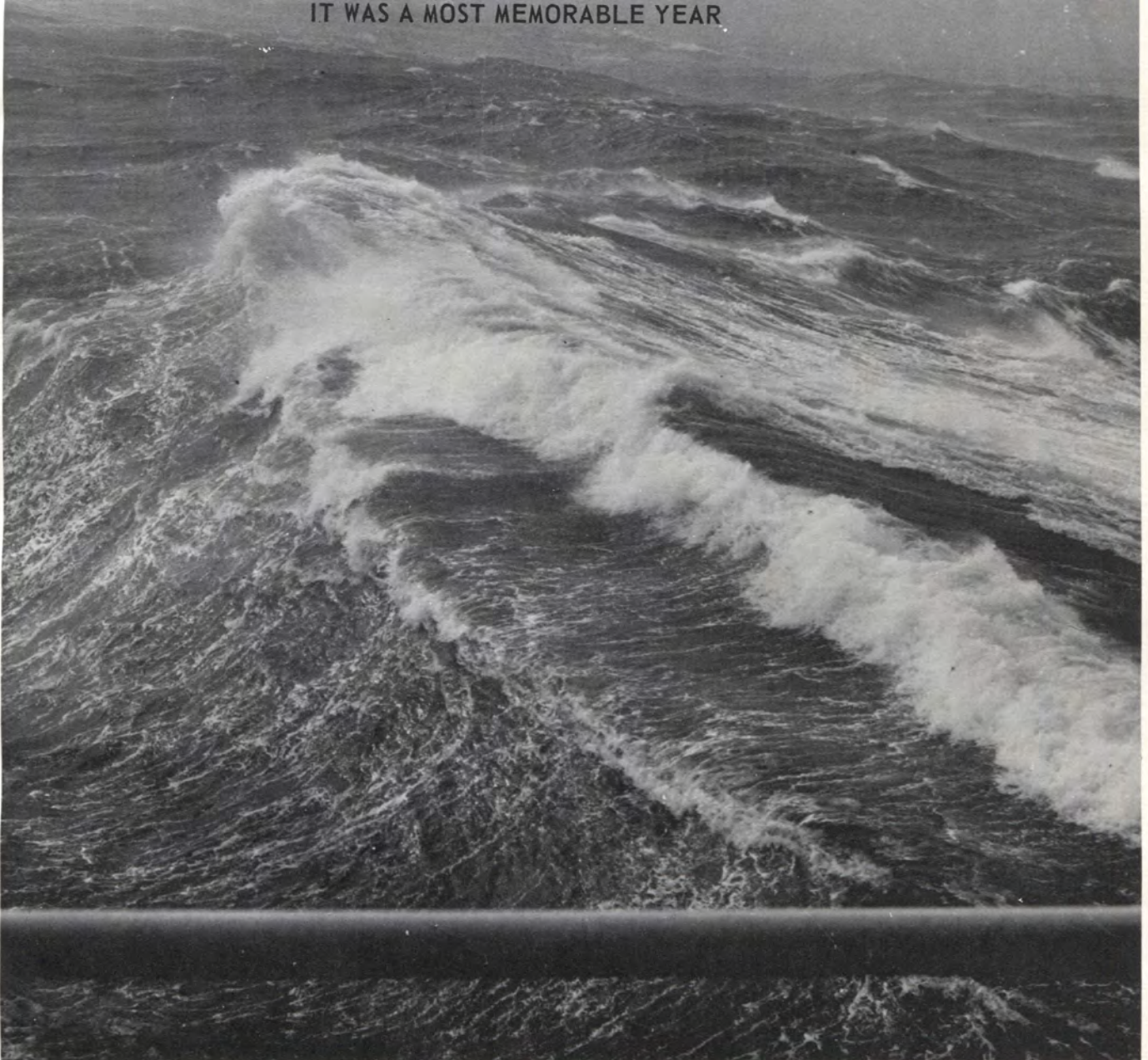
... Admiral Gleaves, USN



USS BLANDY DD-943

THE FIRST YEAR

THIS BOOK ENCOMPASSES THE FIRST YEAR OF
THE RECOMMISSIONED USS BLANDY - FROM
THE ASW CONVERSION IN PHILADELPHIA
THROUGH UNDERWAY TRAINING IN CUBA AND
THE RETURN TO HOMEPORT IN NORFOLK,
VIRGINIA -
IT WAS A MOST MEMORABLE YEAR



"In taking command of a ship you have joined a fraternity which transcends the barriers of age and rank; a brotherhood in many respects going beyond the distinctions of nationality, race, or creed. This fraternity is unimaginable to the landsman at once in its exclusiveness and in its isolation."

. . . COMMAND AT SEA
RADM H. F. Cope, USN





UNITED STATES SHIP
BLANDY
DESTROYER
NINE-FORTY-THREE

Built by
BETHLEHEM STEEL COMPANY
QUINCY, MASSACHUSETTS

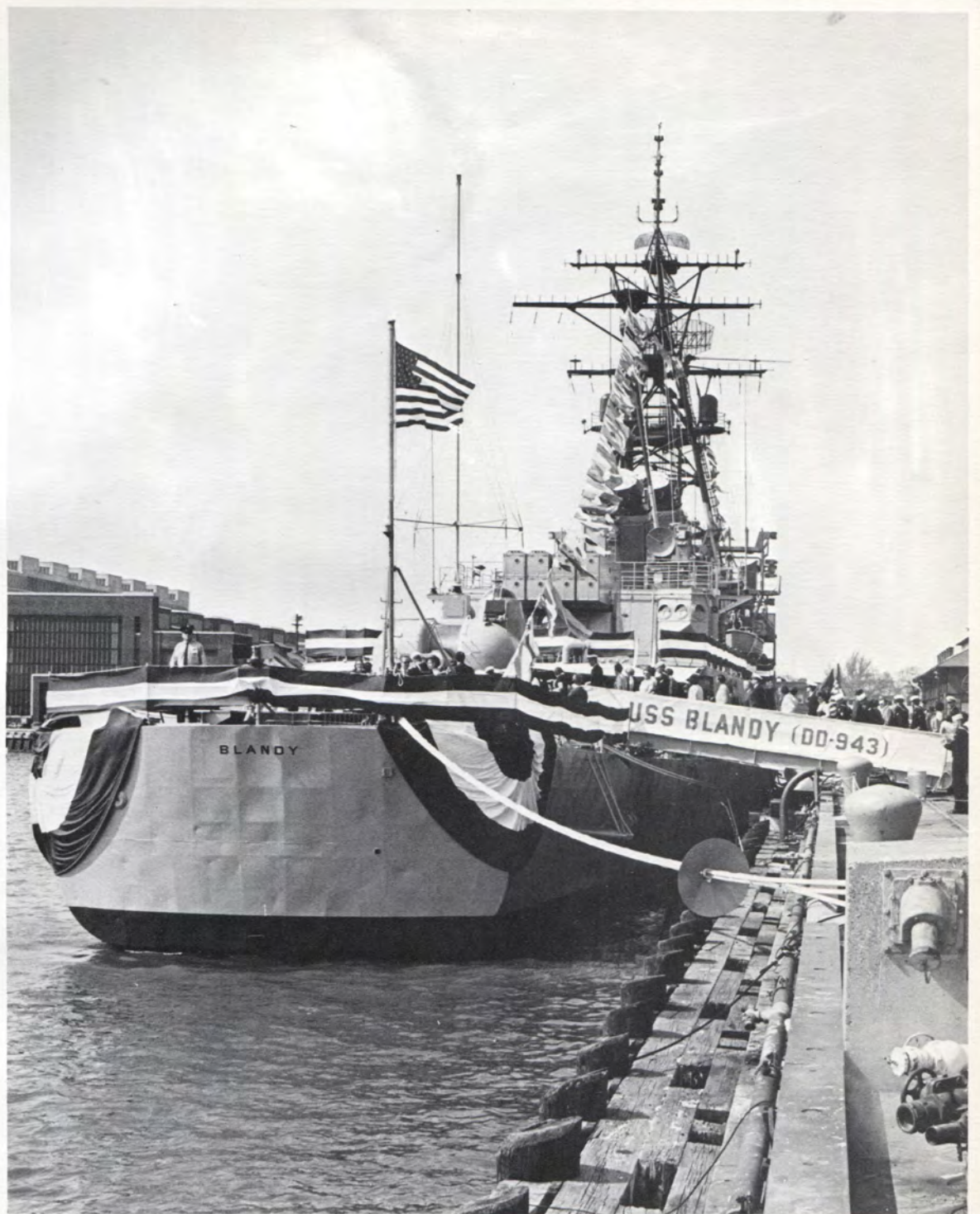
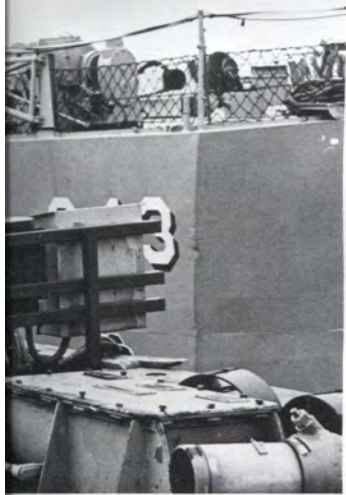
Converted by
PHILADELPHIA NAVAL SHIPYARD
PHILADELPHIA, PENNSYLVANIA

KEEL LAID	29 December 1955
LAUNCHED	19 December 1956
COMMISSIONED	26 November 1957
DECOMMISSIONED	15 January 1969
RECOMMISSIONED	2 May 1970

ASW CONVERSION
21 JANUARY
1969

Build me straight,
O worthy master!
Staunch and straight,
a goodly vessel
That shall laugh
at all disaster
And with wave and
whirlwind wrestle!
Longfellow

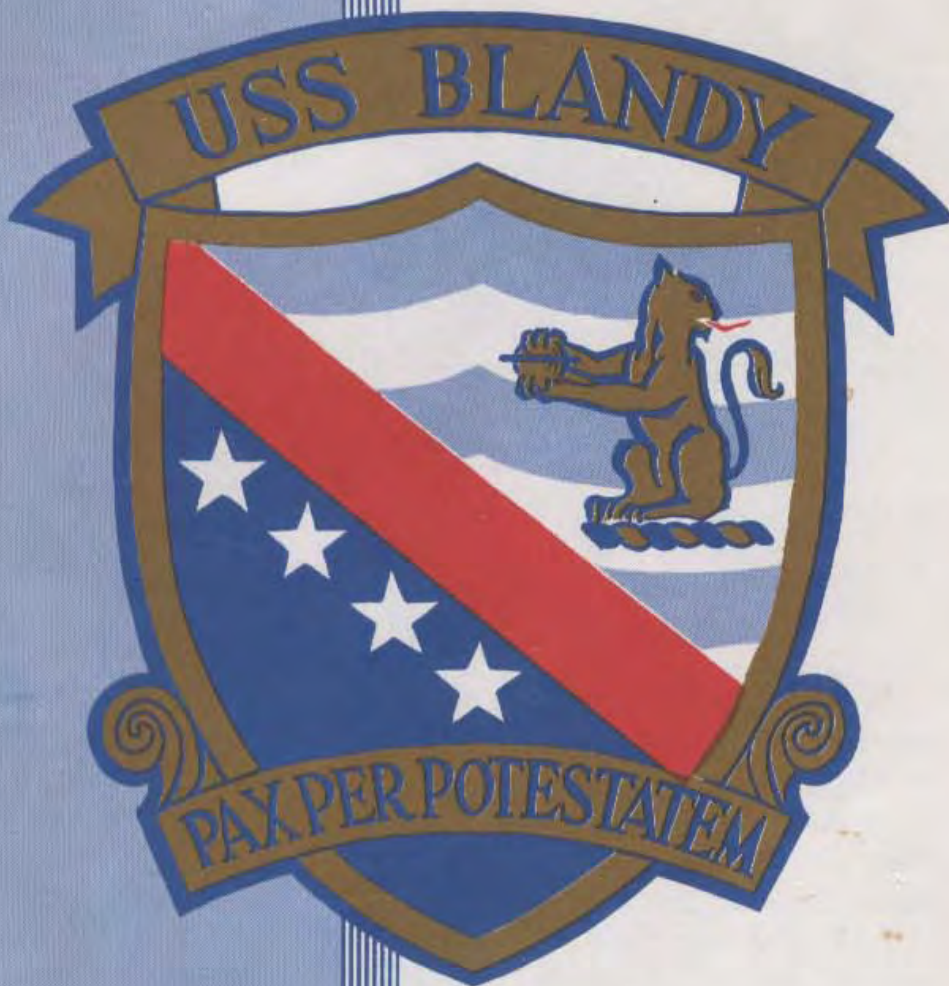




2 MAY
1970



COMMISSIONING
CEREMONY



PHILADELPHIA
NAVAL BASE
2 MAY 1970

COMMISSIONING OF A NAVY SHIP

The commissioning ceremony marks the acceptance of a ship into the operating forces of the United States Navy. Two major steps will be taken during the ceremony today. First, the ship is delivered to the Commandant of the Fourth Naval District, Rear Admiral Kenneth L. Veth. Admiral Veth will read the orders to place the *BLANDY* in commission. The Admiral will then deliver the ship to the Commanding Officer, Commander Christopher S. Lardis and order him to conduct the ceremony to place the ship in commission. Commander Lardis will order the national ensign to be raised and the commissioning pennant to be broken. At that moment, *BLANDY* will become the UNITED STATES SHIP *BLANDY* and Commander Lardis, together with the ship's officers and men, assumes the responsibility to ensure the ship's readiness for any service required by our nation.



THE COMMISSION PENNANT

The commission pennant has for centuries been the symbol of a man-of-war. It is said that when the Dutch Admiral Van Tromp defeated an English fleet in 1652, he cruised with a broom at his masthead to signify that he had swept his enemies from the sea. When the positions were reversed in the following year, the British admiral hoisted a long streamer from his masthead to represent the lash of a whip indicating that he had whipped his adversary. Thus, the narrow "coachwhip" pennant has become the distinctive mark of a ship of war.

Today, when the order to commission the ship is given, the commission pennant will be hoisted at the gaff, which is located high on the forward mast. It will fly day and night, and will be hauled down only to display the personal flag of another officer of higher rank than the Commanding Officer when embarked in the ship.



UNITED STATES SHIP

BLANDY

DESTROYER

NINE-FORTY-THREE



Built by

BETHLEHEM STEEL COMPANY
QUINCY, MASSACHUSETTS



Converted by

PHILADELPHIA NAVAL SHIPYARD
PHILADELPHIA, PENNSYLVANIA



KEEL LAID 29 DECEMBER 1955
LAUNCHED 19 DECEMBER 1956
COMMISSIONED 26 NOVEMBER 1957
DECOMMISSIONED 15 JANUARY 1969
RECOMMISSIONED 2 MAY 1970



SPONSOR AT LAUNCHING
MRS. JOHN M. LEE



ADMIRAL THOMAS H. MOORER
Chief of Naval Operations



REAR ADMIRAL J. NEVIN SHAFFER
Commander Cruiser-Destroyer Force, Atlantic



COMMANDER CRUISER-DESTROYER FORCE
UNITED STATES ATLANTIC FLEET

1 May 1970

Dear Commander Lardis,

My sincere best wishes go to you and your crew on the recommissioning of the USS BLANDY (DD 943). May the voyage ahead be most rewarding and challenging.

BLANDY's commissioning again brings to the Fleet a powerful instrument of national defense. The improvements in the equipment now installed in BLANDY will enable her to take her place once again in the modern, changing Navy of today and to effectively counter one of the most pressing threats to this Nation's fleet, the submarine.

I feel confident that BLANDY's splendid past record will manifest itself in such a manner in the "new" BLANDY to make her worthy of her namesake, Admiral H. P. Blandy.

I am certain that your leadership and devotion, and that of your officers and men will enable you to develop that effective teamwork so necessary in a unit in our country's first line of defense. The great trust you have received in this assignment reflects both my own, and the Navy's confidence in your ability to manage the modern man of war and to ensure BLANDY once again takes her rightful place as a front-runner in the race for unit excellence in the Atlantic Fleet.

On behalf of the Cruiser-Destroyer Force, I welcome BLANDY back to the Atlantic Fleet. May she ever enjoy the best of good fortune.

Sincerely,

A handwritten signature in black ink, appearing to read "J. N. Shaffer".

J. N. SHAFFER
Rear Admiral, U. S. Navy

Commander Christopher S. Lardis, U.S. Navy
Prospective Commanding Officer
U.S.S. BLANDY (DD 943)
Philadelphia Naval Shipyard
Philadelphia, Pennsylvania



CHIEF OF NAVAL OPERATIONS

1 May 1970

Dear Captain,

My sincere best wishes go to you and to your crew on the recommissioning of BLANDY (DD-943).

From her first commissioning in 1957, BLANDY played a leading role in the work of our modern Navy. In the Atlantic and Mediterranean she displayed that combination of proud proficiency and "can do" spirit that has ever been the hallmark of the true destroyerman. Honored for battle efficiency and for her high level of expertise in antisubmarine operations, BLANDY has been called on to do many jobs. She has done all of them well. Whether operating with the navies of our NATO allies, participating in the Gemini space program, or holding the line during the Cuban quarantine of 1962, she has amply demonstrated her mettle. Before beginning modernization, she again proved her worth by earning the Meritorious Unit Commendation for effective fire support and shore bombardment work along the coast of Vietnam.

In war as in peace, BLANDY has set a standard for others. It is for you, and every man who sails in BLANDY, to carry it on and add new honor to it. Fleet Admiral King reminded us that "machines are as nothing without the men who man them and give them life." I know that your devoted leadership, with that of your officers and petty officers, will reflect the high trust you have received.

On behalf of the Navy, I welcome BLANDY once more to the fleet. May the best of good fortune be yours.

Sincerely,

T. H. MOORER
Admiral, U. S. Navy

Commander Christopher S. Lardis, USN
PCO, BLANDY (DD-943)
Philadelphia Naval Shipyard
Philadelphia, Pa. 19112

COMMANDING OFFICER

COMMANDER
CHRISTOPHER S. LARDIS
UNITED STATES NAVY



Commander Christopher Stephen Lardis graduated from the United States Naval Academy at Annapolis with the class of 1953. Commander Lardis' first assignment was in Ville Franche, France, aboard the SIXTH Fleet Flagship USS NEWPORT NEWS (CA-148), as Assistant Navigator. Next he was assigned as Chief Engineer of the Destroyer Escort DELONG. His first duty with the shore establishment was with the Office of Naval Research, in 1958, serving as a Project Officer and Liaison Officer. Commander Lardis returned to sea in January 1960 as a staff officer of Commander Destroyer Squadron THREE in Yokosuka, Japan. In 1962, he moved to Hawaii and served on the staff of the Commander in Chief, U.S. Pacific Fleet in Pearl Harbor as the Fleet Anti-Air Warfare Officer. Two years later he was selected for the Command and Staff Course at the Naval War College. He graduated with the class of 1965 and reported shortly thereafter as the Executive Officer of the Destroyer GEARING. Commander Lardis again returned to Europe in 1967 as the Fleet Readiness Officer on the staff of the Commander, SIXTH FLEET. He reported as Prospective Commanding Officer of the BLANDY in November, 1969 and assumed Command of the BLANDY upon commissioning in May 1970.

EXECUTIVE OFFICER

LIEUTENANT COMMANDER
WILLIAM W. PIPPENGER
UNITED STATES NAVY



Lieutenant Commander William W. Pippenger graduated from Indiana University in 1956 and was commissioned an Ensign in 1958 upon completion of Officer Candidate School in Newport, Rhode Island. He served aboard the Destroyer USS EPPERSON (DD-719) and the Ocean Minesweeper USS SKILL (MSO-471). Prior to reporting to USS BLANDY (DD-943) Lieutenant Commander Pippenger was Commanding Officer of the Ocean Minesweeper USS DIRECT (MSO-430). Previous tours of duty have included the Naval Advisory Group, Vietnam, and the staff of the Naval Reserve Training Corps at Columbia University. Lieutenant Commander Pippenger departed BLANDY in December 1970 and assumed command of the Newport, Rhode Island based Destroyer Escort USS VAN VOORHIS (DE-1028) in January 1971.

WEAPONS DEPARTMENT



You can go where you please,
you can skid up the trees,
but you don't get away from the guns!
Kipling



LT T. REEDER
WEAPONS OFFICER



LT W. SOVOBODA
ASW OFFICER



LTJG J. BROPHY
FIRST LIEUTENANT



LTJG W. DAVIS
SECOND DIVISION OFFICER



LTJG S. HIPPI
GUNNERY ASSISTANT

AS Division



STCM W. ALDERMAN



STGSN T. Donahue



STG3 S. Dunker



ST1 D. Giddens



STG3 R. Goad



ST1 J. Hadley



Boy, are those mid watches rough!



For that matter, so are 1200-1600's.



STG2 P. Humphries



STG2 B. Koscher



STG2 B. Roth



"Looks like another fender-bender!"



GMG1 R. Vandeweerd



GMG3 R. Clint



GMGSN W. Hawkes



SN F. Carmichael



"Can Vandeweerd come out and play?"



STG2 K. Stone



STG2, Ens Volin



ST1 L. VanDyke



"Hello, Uncle Al!"



"F" Troop



TM2 F. Dalrymple



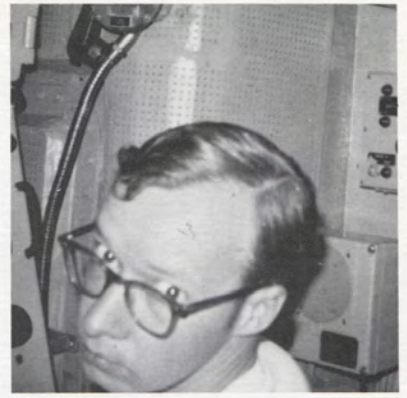
SN P. Germershausen



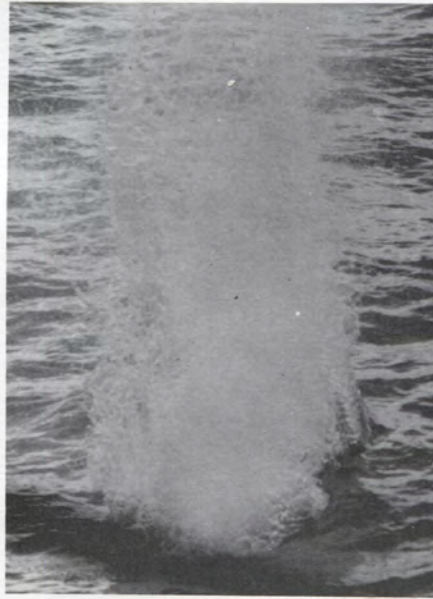
SN V. Guzman



SN S. Kniaz



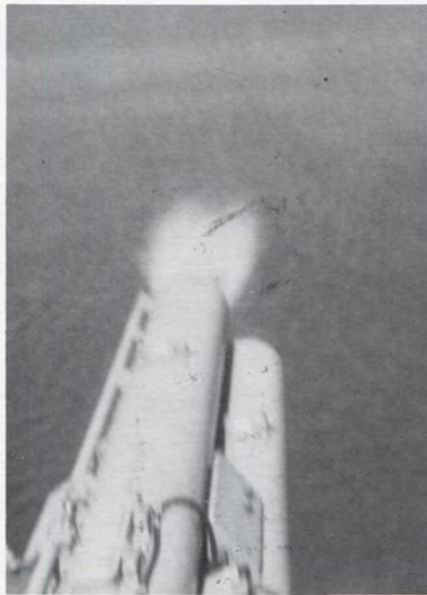
"Fire one!"



SPLASH SPLASH SPLASH

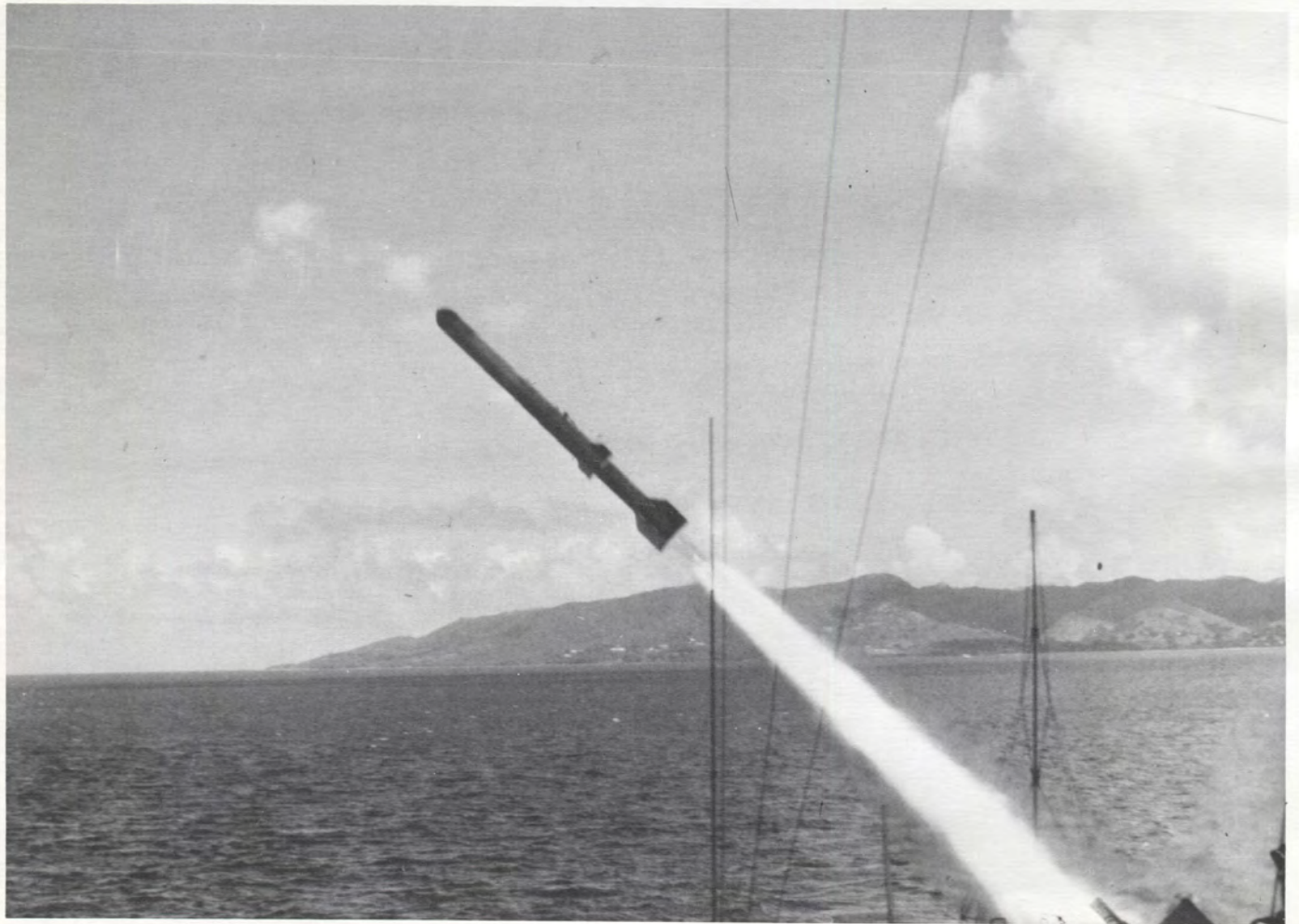
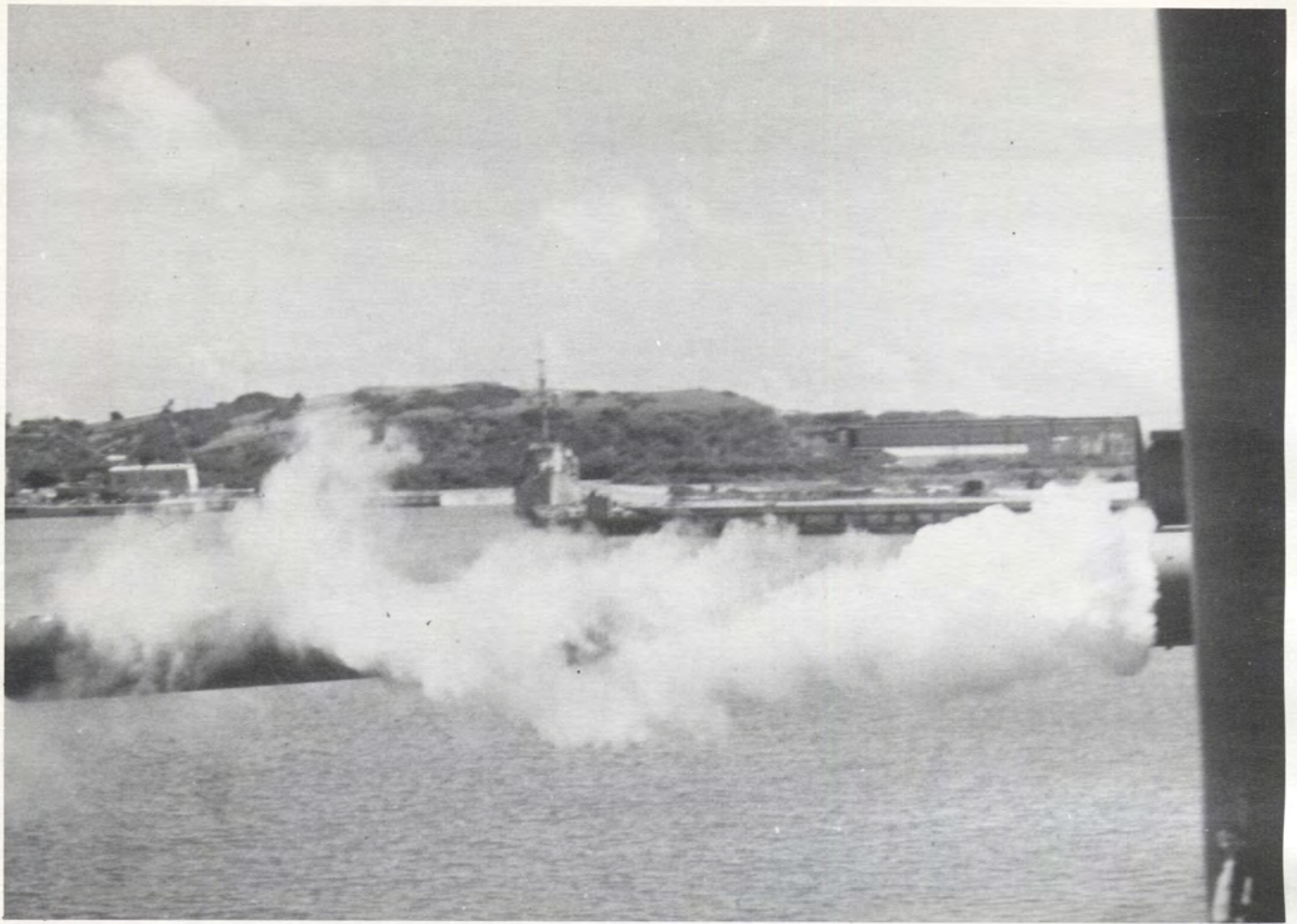


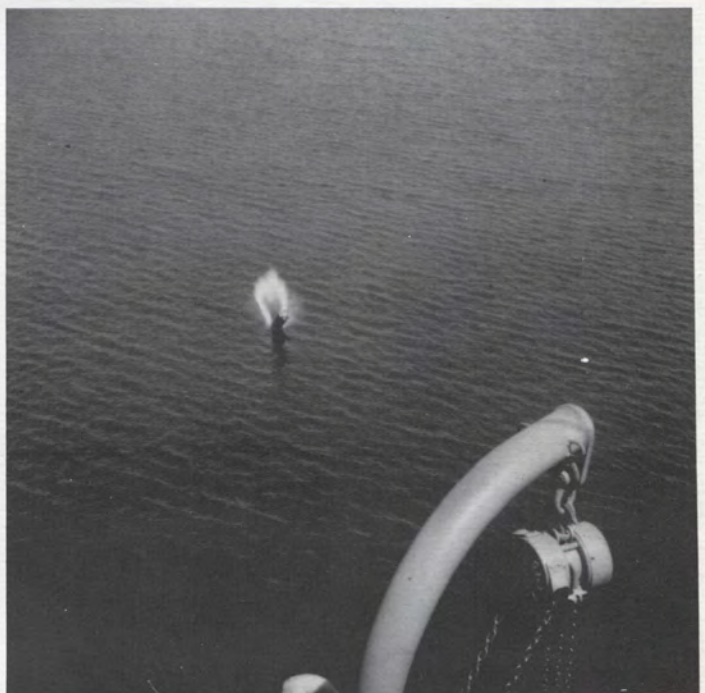
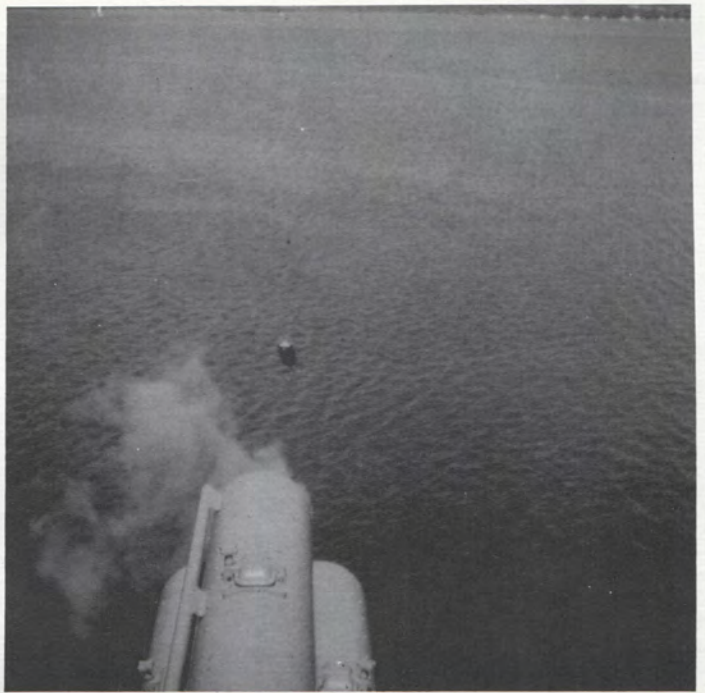
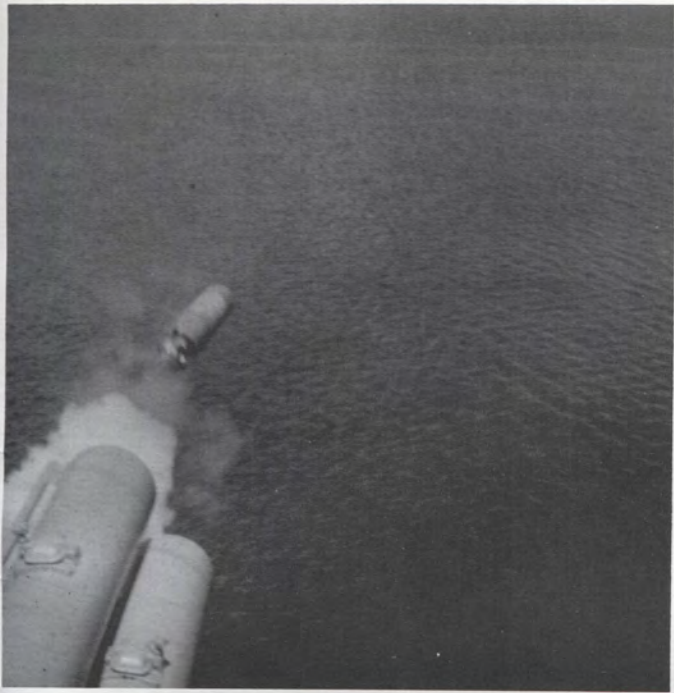
"Fire two!"

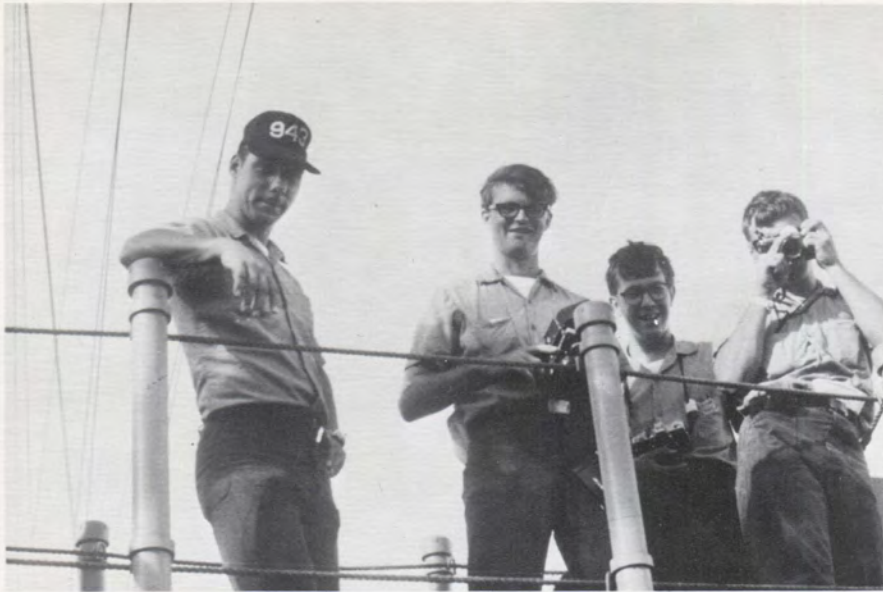


Fire three

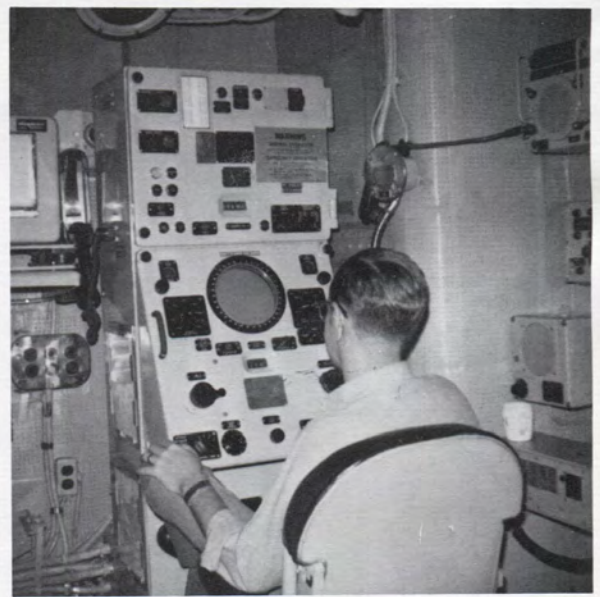








Where's your camera, Kenny?





LTJG BROPHY

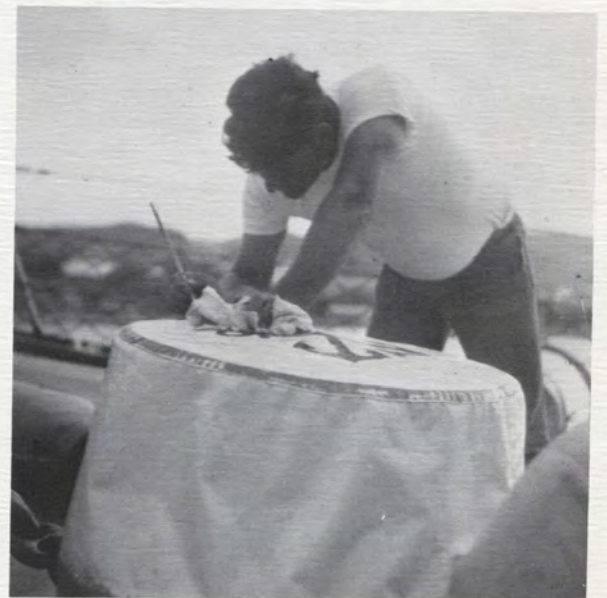


LTJG HIPPI



BMC W. ROGERS

First Division





BM1 W. Green

BM2 T. Lake

BM2 L. Farrell

BM3 J. Abdallah

BM3 W. Nichols



BM3 E. Scheid

BM3 C. Wheeler



SA T. Almeida

SN M. Bowden

SN W. Bowlin

SN J. Chase

SN C. Carmichael

SN F. Colson





SA R. Cooper

SN W. Cullion

SA J. Curley

SN P. Daley



SA D. DeCrescenzo SN H. Duddy

SN R. Easley

SN A. Farace



SN L. Greenlee

SN R. Hochberger



"DOGGONE IT!"



SA D. Larkins

SN T. Lewis

SN D. Longo

SA R. Orth



SN A. Kent



SA F. Pineiro



DECK SEAMANSHIP



SA J. Scouler

SN J. Shields



SA G. Smiley



SA L. VanSant



SA D. Vidmar



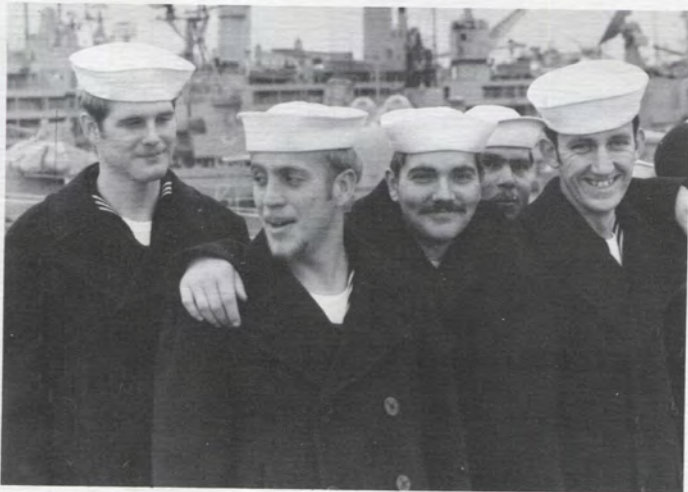
SN D. Williams



SA L. Yelverton



SA J. Yentes











FTGC D. BEZANSON

Second Division



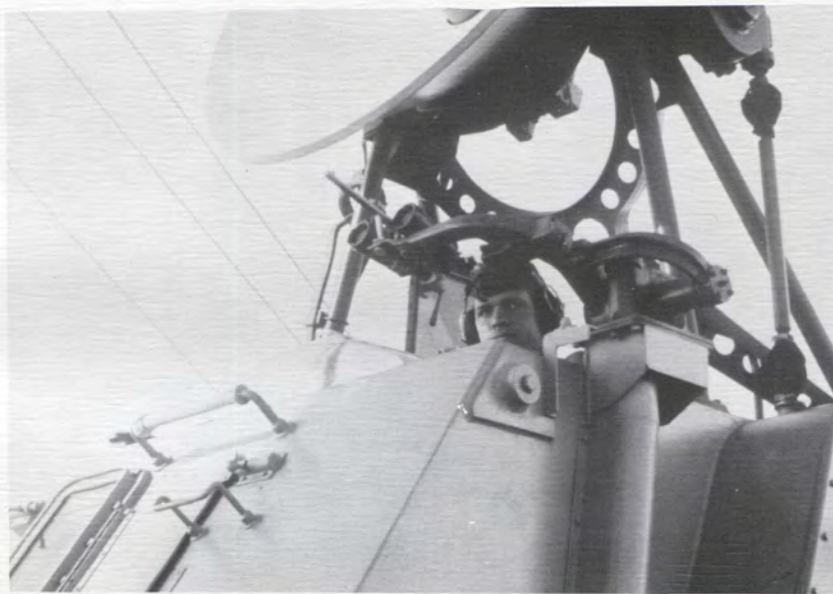
FTGC J. MORGAN



FTG3 S. Anderson FTG2 J. Bergig FTG2 M. Bychowski FTG3 J. Fawcett FTG3 R. McCathran



FTG3 C. McGinnis



What a way to spend a Sunday afternoon!



FTG1 C. Mocheski



FTG3 H. Moon



FTG2 R. Neyrinck



FTG3 R. Thomas



FTG3 C. Willis





GMG2 V. Bentley



GMGC R. HAMBY



SA L. Buffalo



GMG3 M. Frankenfield



GMG3 C. Darland



SN C. Cardwell



SN J. Graham



GMG2 C. Fugua



GMG2 D. Grout



SN G. Leuze



GMGSN W. Nixon



SA K. Orpurt



GMG2 D. Sistrunk

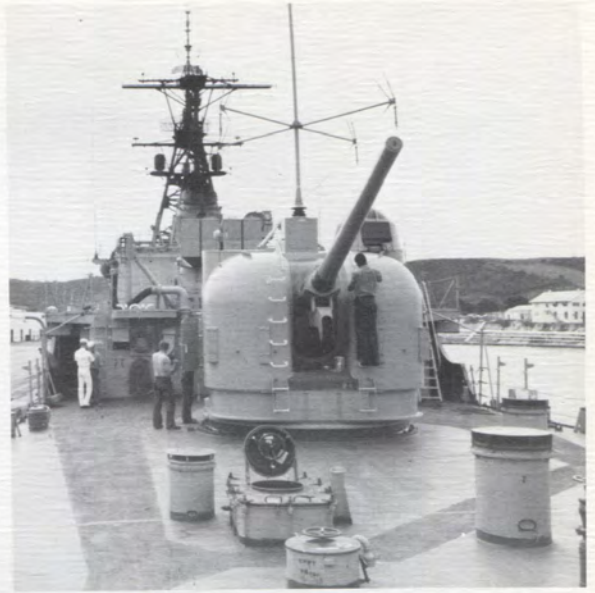


SN N. Carlson





Chief Hamby at his best.



Smile Sistrunk!



"Sure, it's loaded."



"Take that Ivan!"

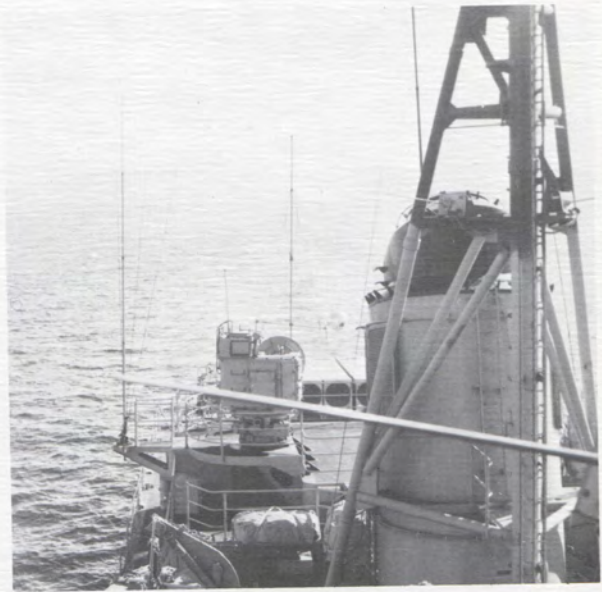
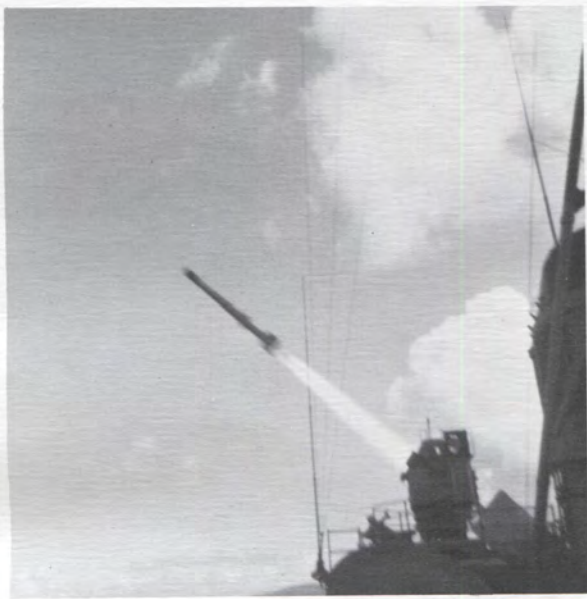


My girdle is killing me.

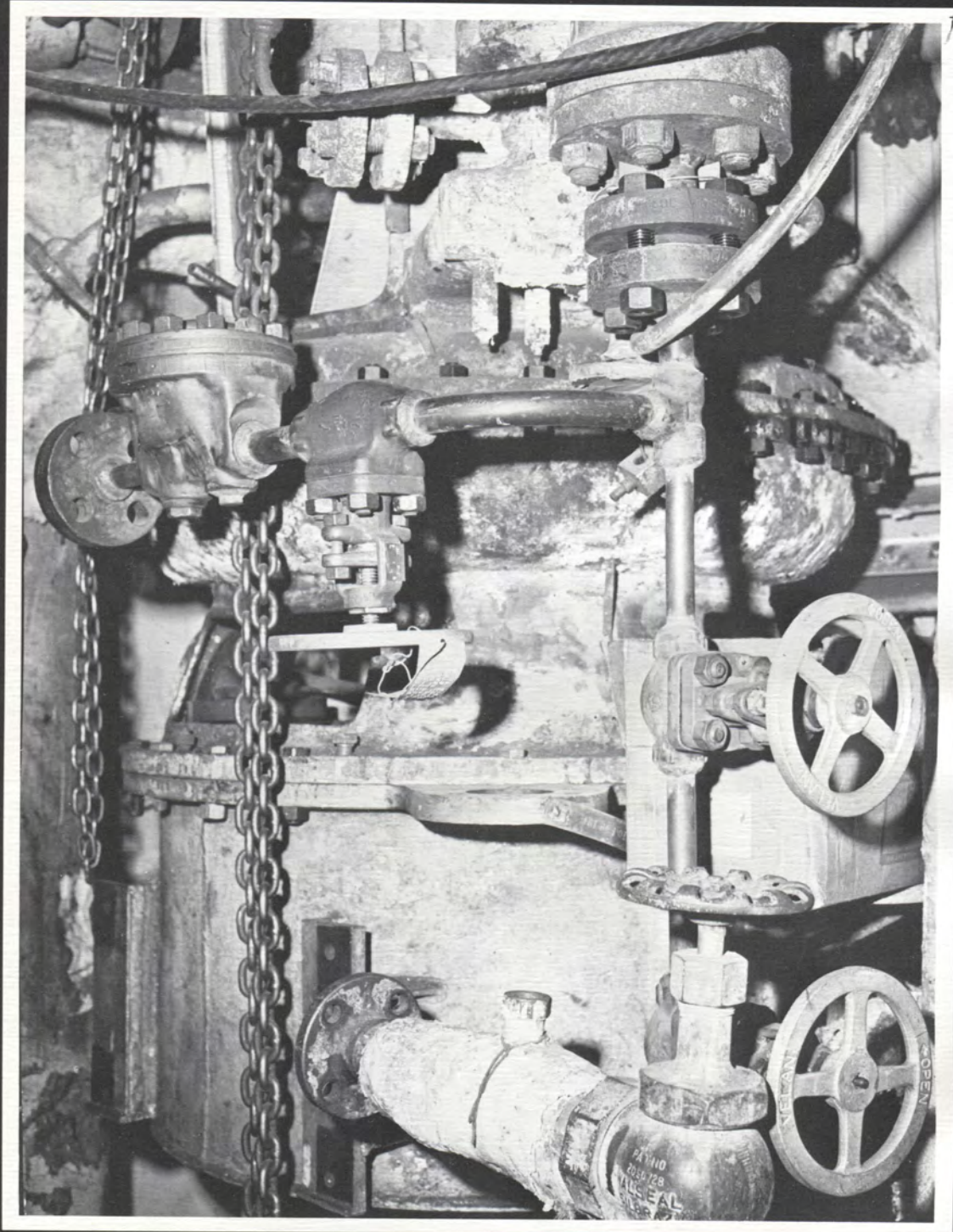


You should have seen that fish.





ENGINEERING DEPARTMENT



From coupler-flange to spindle-guide
I see Thy Hand, O God
Predestination in the stride o' yon
connectin' rod.

But Chief Hill, doesn't steam spoil romance at sea?

McAndrew's Hymn



LT F. DOBSCHA
CHIEF ENGINEER



LTJG W. SCHAMU
MAIN PROPULSION ASSISTANT



LTJG J. PICKERING
DAMAGE CONTROL ASSISTANT



LTJG J. O'MEARA



BTCS J. HILL



1 Fireroom



BTC S. TABOR



BT1 R. Boyd
P.O.I.C.



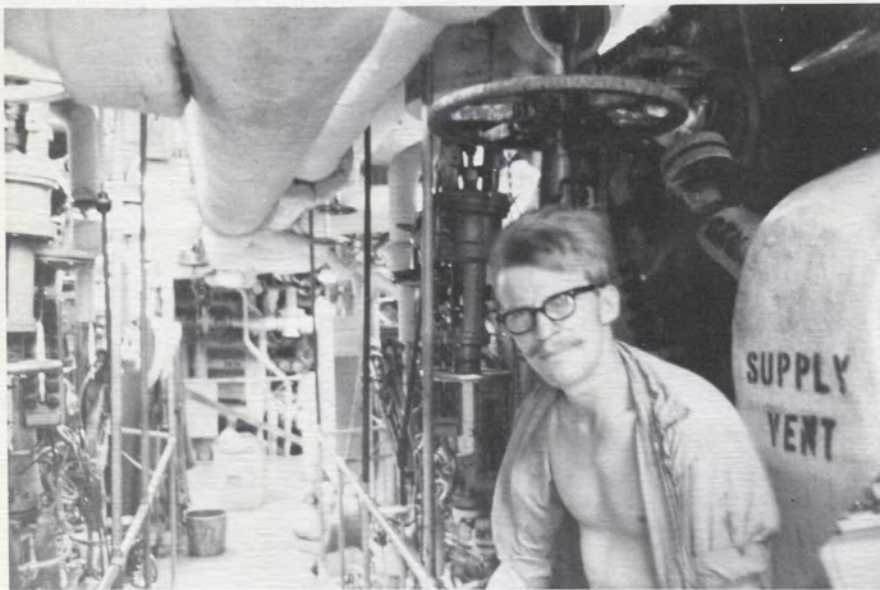
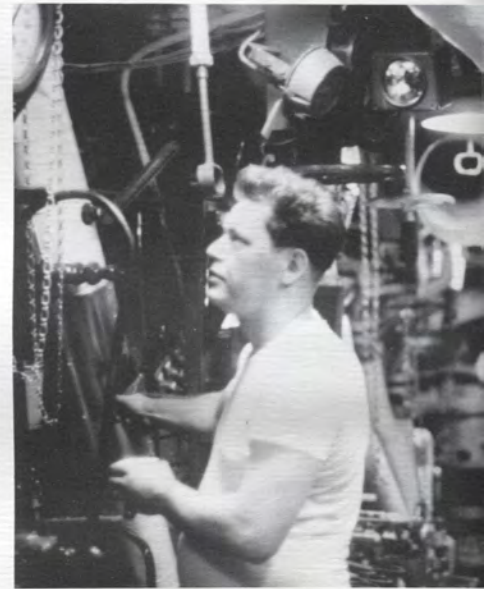
BT1 B. Hill
OIL KING



BT2 L. Andrews



BT2 C. Haun



BT3 R. Thomas



BT3 P. Harrington



BT3 R. Cassity



BT3 J. Moak



BT3 W. Derges



BTFN R. Fancy

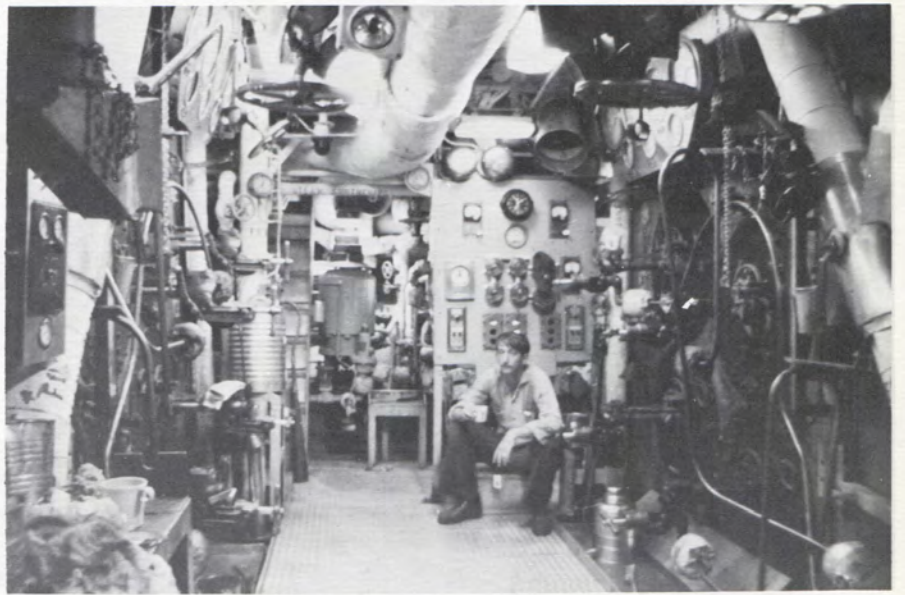
BTFN T. Crookston

FN R. Sparks

FN J. Sera

FN C. Shuster

BTFN P. Howerton





BT1 B. Miller

BT2 D. Lamphier



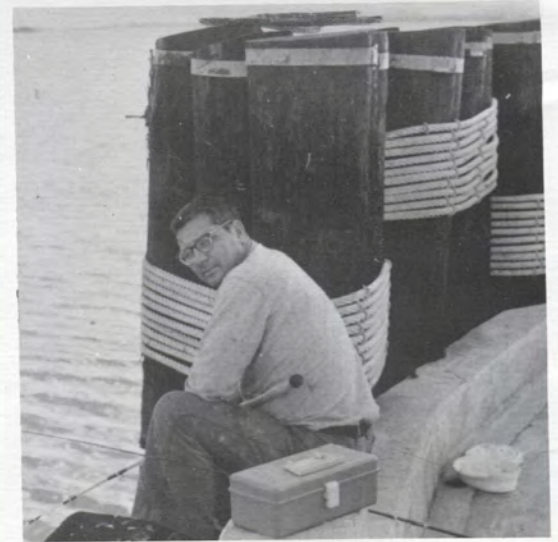
2 Fireroom



BT3 A. Harris

BT3 R. Thomas

BT3 V. Valliere



FN M. Callahan

FN T. Clark

FN L. Smith

FN W. Smith

FN S. Toliver

FN M. Walker

FN T. Williams



MMC H. ECKARD



MMCS R. SCHULRUD



MMC P. GARRETT

Main Control



MM1 A. Songer



MM2 K. Reed



YN3 J. Israel



MM3 R. Tuck



MM3 J. Davis



MM3 E. Tiede



MM3 J. Wilson



MM3 G. Maxcy



MM3 H. Webb



MM3 E. Zella



FN F. Mazzella



FN J. Weeks



FN L. Carr



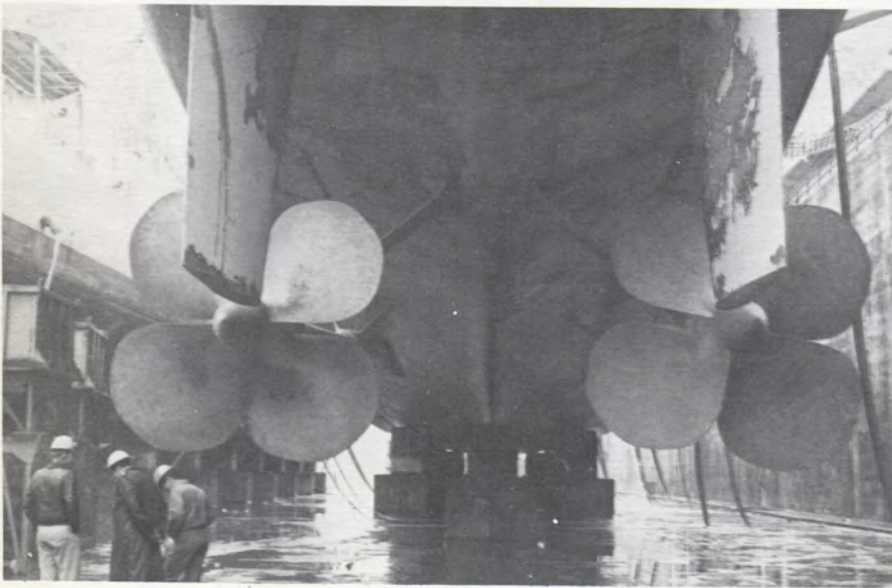
FN C. Coens



FN G. Walker



MMFN L. Selby



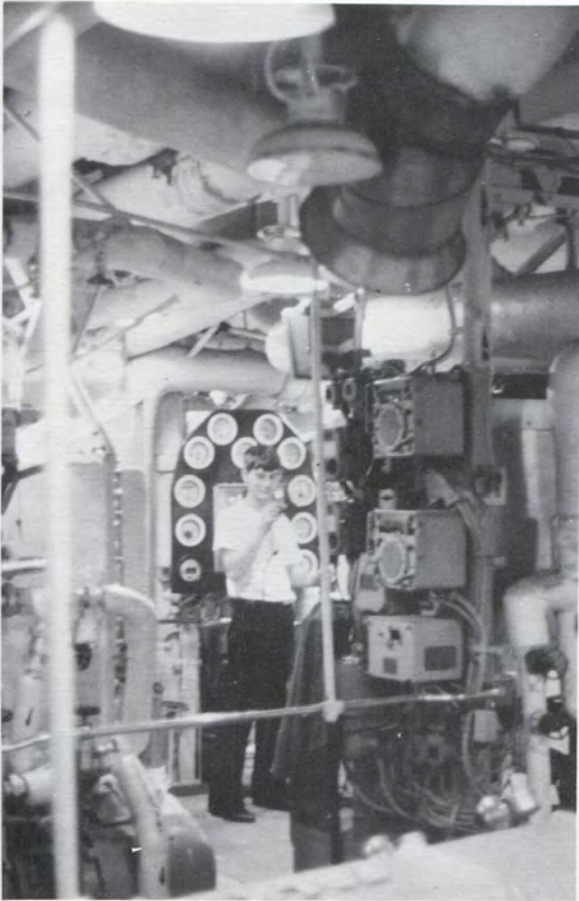
2 Engineroom



MM1 W. Smith



MM2 L. Veasey



MM3 G. Wyant



MM3 H. Bullock



MM3 E. Lewis



FN A. Kennedy



FN D. Ross



MMFN G. Sacco



FN T. Moore



FN M. Washington



MMFN J. Mertz



MMFN D. Scheunemann

R Division



SF1 F. Davolt EN1 M. Johnson MR1 G. Peterson



DC3 T. Clemons



DC3 R. Parker



DC3 C. Cannata



SF3 D. Hall DC3 R. Kay FN F. Kozar



SF3 J. Manning DC3 W. Shouldis SF3 D. Sund



MM2 R. Gossett

MM2 J. Jossman



ENFN R. Beiriger

FN R. Bryant



FN A. Cornelio

FN D. Corpuz

EN3 D. Maynard



FN J. Sittig

ENFN G. Wallace

FN R. Wilson





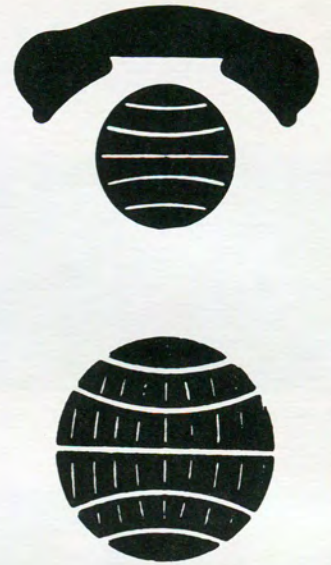
EMCS W. ROBERTS



IC1 G. McCormick

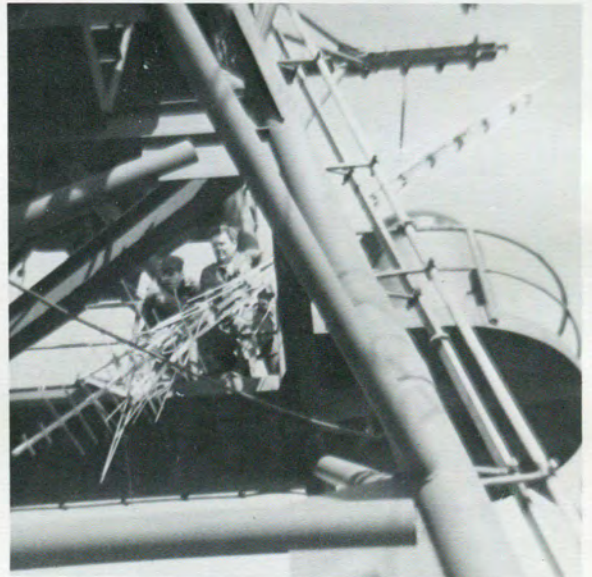


EM2 G. Cayia



FN L. Crosby

EM3 R. Crouse



EMFN J. Ferrell

EM3 B. Fuller

IC3 G. Kipp



FN C. Lofton

EMFN C. Mahone

FN S. Monte

EM3 H. Slivinski

IC3 J. Thompson

ICFN M. Roberts



LTJG J. MORETTO
CIC OFFICER



NO PHOTO AVAILABLE

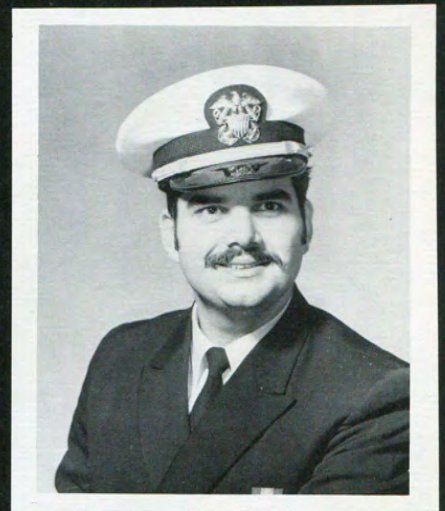
LT BODIE
COMMUNICATIONS OFFICER



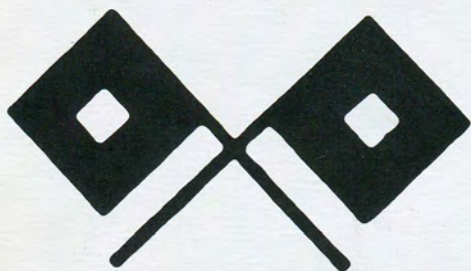
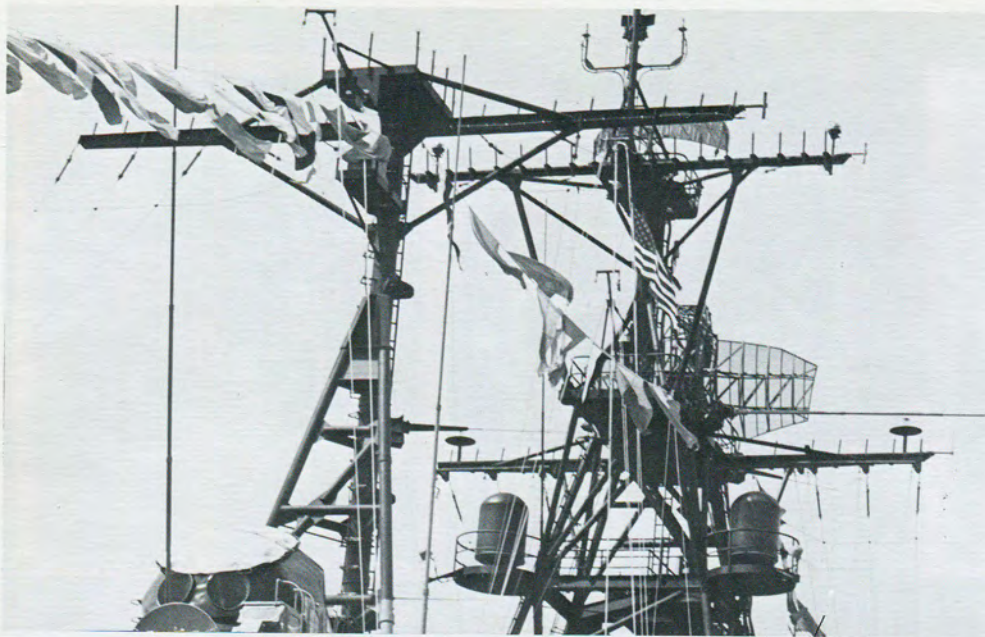
LT M. ADAMS
OPERATIONS OFFICER



WO B. PIMM
EMO



ENS R. NATHAN
ASS'T COMM OFFICER



OC



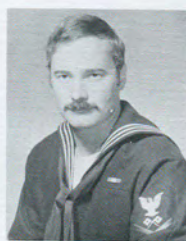
RMC B. WALKER



SM2 H. Ellis



SM2 R. Coleman



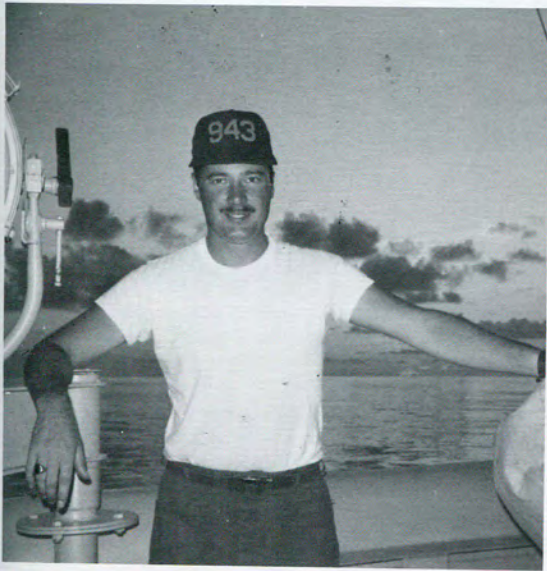
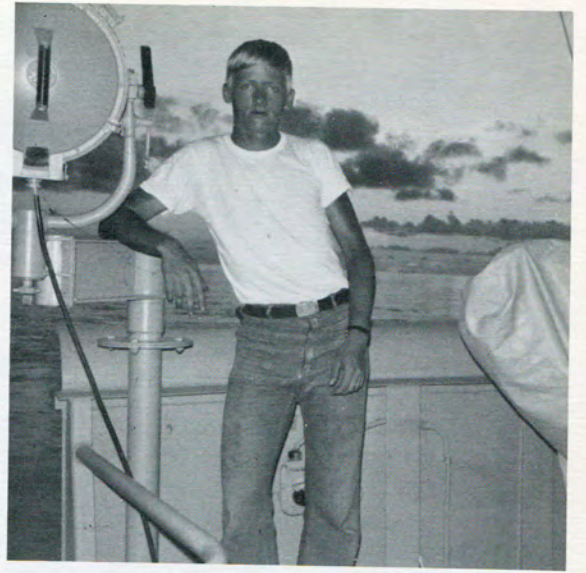
SM3 D. Nadeau



SM3 D. Stewart



SM3 G. Smerud





RM2 W. Geisel



RM1 B. Pollard



RM1 G. Wierzbicki



RM2 D. Lawson



RM2 C. Payne



RM3 J. Brackens



RM3 J. Flowers



RM3 D. Welsh



RM3 R. Lorenz



RMSN J. Wells



RMSN J. Huntoon



RMSN C. Witherspoon



RMSN R. Ratliff



RMSN D. King



RMSN T. Harner



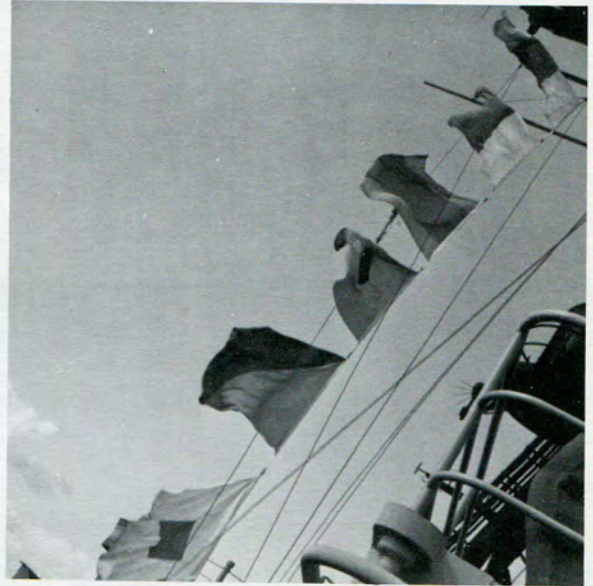
RMSN M. Pratt



SN J. Brumfield



Signalmen say adios....



... and a clean sweep ...



... to gitmo



ZZZ



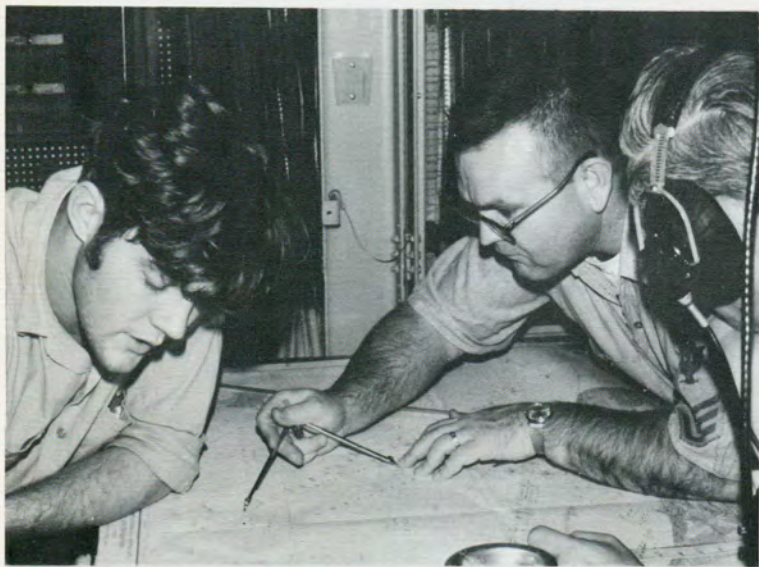
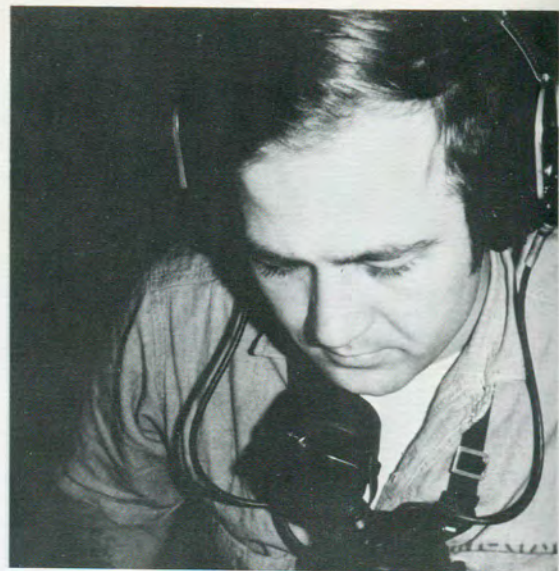
RDC L. HARTLEY



RD1 W. Koraska RD1 J. Lewis



RD2 L. Smith RD3 C. Corriher



RD3 R. Hella RD3 G. LaPoint RD3 S. Mench

Radar Gang



RD3 E. Miller RD3 L. Moyer



RD3 S. Odysseus RD3 N. Sadler RD3 M. Scott



RD3 H. White

RD3 R. Barnett

RDSN R. Brown



SN J. Saylor

RDSA G. Schneider



RDSN P. Short

RDSN J. Taylor





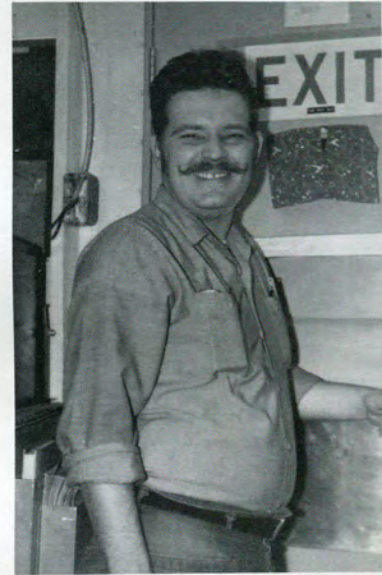
ETR1 S. Jowers ETR2 O. Buckley ETR2 P. Dendorfer



ETN2 J. Hooven ETR2 J. Martonvic ETN2 T. Porter



ET's



ETR3 S. Goff ETN3 J. Senick ETRSN M. Giacobozzi ETNSN J. Grubb

SUPPLY DEPARTMENT



LTJG J. MOWERY



LT J. DRAPER



LTJG S. LANNAEN





SKC R. RHUE



SK1 R. Tupper



You ET's need parts at the darndest times.

Storekeepers



But think what we could do with all that money.



Thinking of days gone by . . .



DK2 R. Nelson



SK3 M. Renaud



DK3 M. Wallis



SK3 D. French

Disbursing Clerks



Soul brothers



Ok, the winner does the paper work.
The loser cleans the storerooms.



Wik' checks up on the officers' goodies.



What mermaid?



SKSN R. Sefzik



SN E. Bedocs



CS1 H. Dorman

CS2 G. Monford

CS2 F. Ferrara

CS3 T. Morse

CSSN M. Chene



Aw, com'on, do I have to?



Sanitation lectures.

COMMISSARY



Let's see, Southern fried chicken,
Southern style beans and cornbread . . .



Tom gets right into his work.



SN F. Westerman

SN C. Norris

SN P. Wallendorf



SN J. Santiago SA M. Crowder SN L. Cuadrado



So watchya want for dessert?



Jolly Wally, always first.



Mess Decks - before



COMMISSIONING DAY.



Mess Cook



SA W. Cruz SA S. Lerman SA M. Riggs



THANKSGIVING



SH1 C. Richardson SH2 R. Tsosie



That will learn you. . . call this place a clip joint.



Ship's



Just like Mother's.



Division party time.



SH3 A. Borzomati SH3 C. Carter

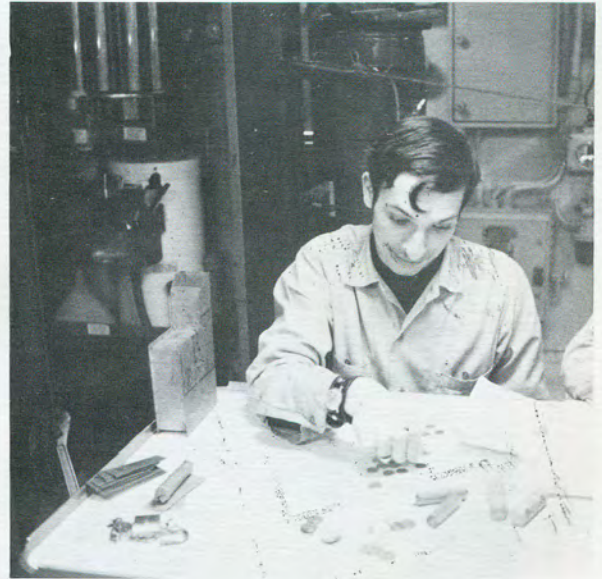


SH3 S. Wilde

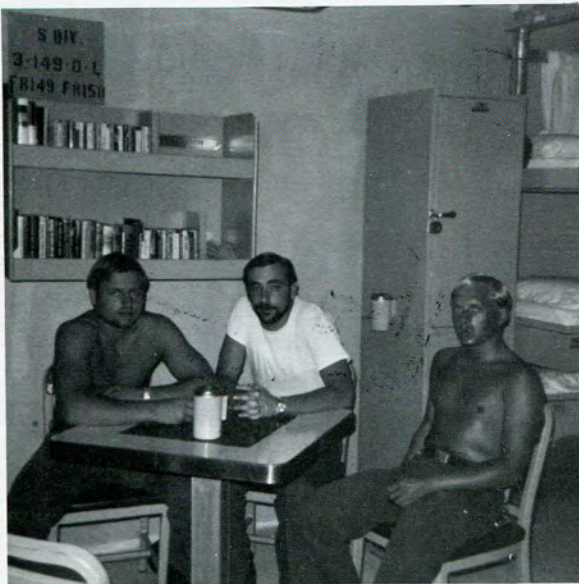


And I'd like one of those over there.

Servicemen



Mine, all mine.



Putz, Albert and Mike



SN J. Scarcella

SN G. Bridie



SD1 M. Mariano SD1 J. Saunders



No, Art, fork on the left, knife and spoon on the right.



OH, NO! Watch the fingers.



Fine meal today, Saunders.



SD3 V. Medina TN R. Cementina



TN E. Empamano TN A. Gante



Hamburgers ala Wardroom.



Right, Captain, Peanut butter and jelly sandwiches for lunch today.

Stewards



I only do this for a hobby.

SINCE MOVING ON BOARD THE SHIP,
THE CREW HAS:

CONSUMED: 21,166 pounds of beef.
4,926 pounds of chicken
11,152 frankfurters
4,853 pounds of ham
6,494 pounds of pork
115,596 eggs
162,208 cups of milk
11,712 cups of ice cream
84,003 cups of Coke.

RECEIVED: \$676,580 in pay
5,500 haircuts

TURNED IN: 1,783 requisitions

FOR: \$89,279 in parts

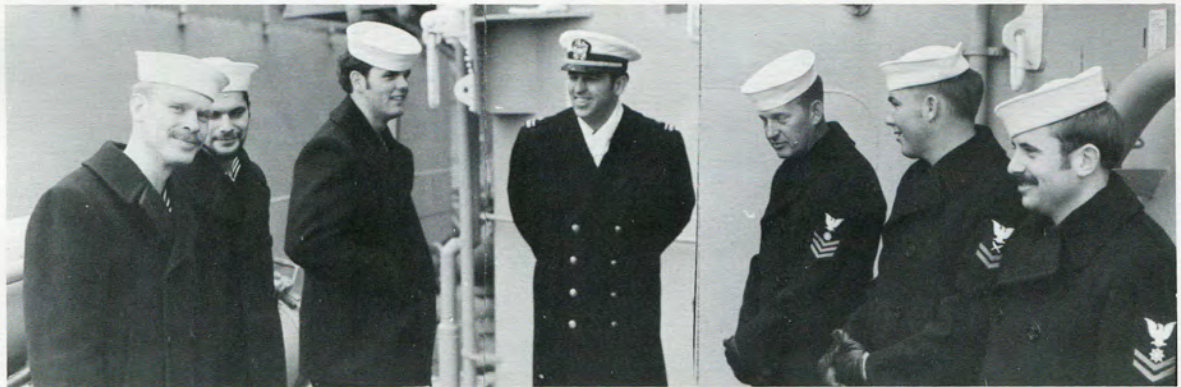
AND SPENT: \$40,201 in the ship's store

ALL FIGURES ARE TO 1 MARCH 1971



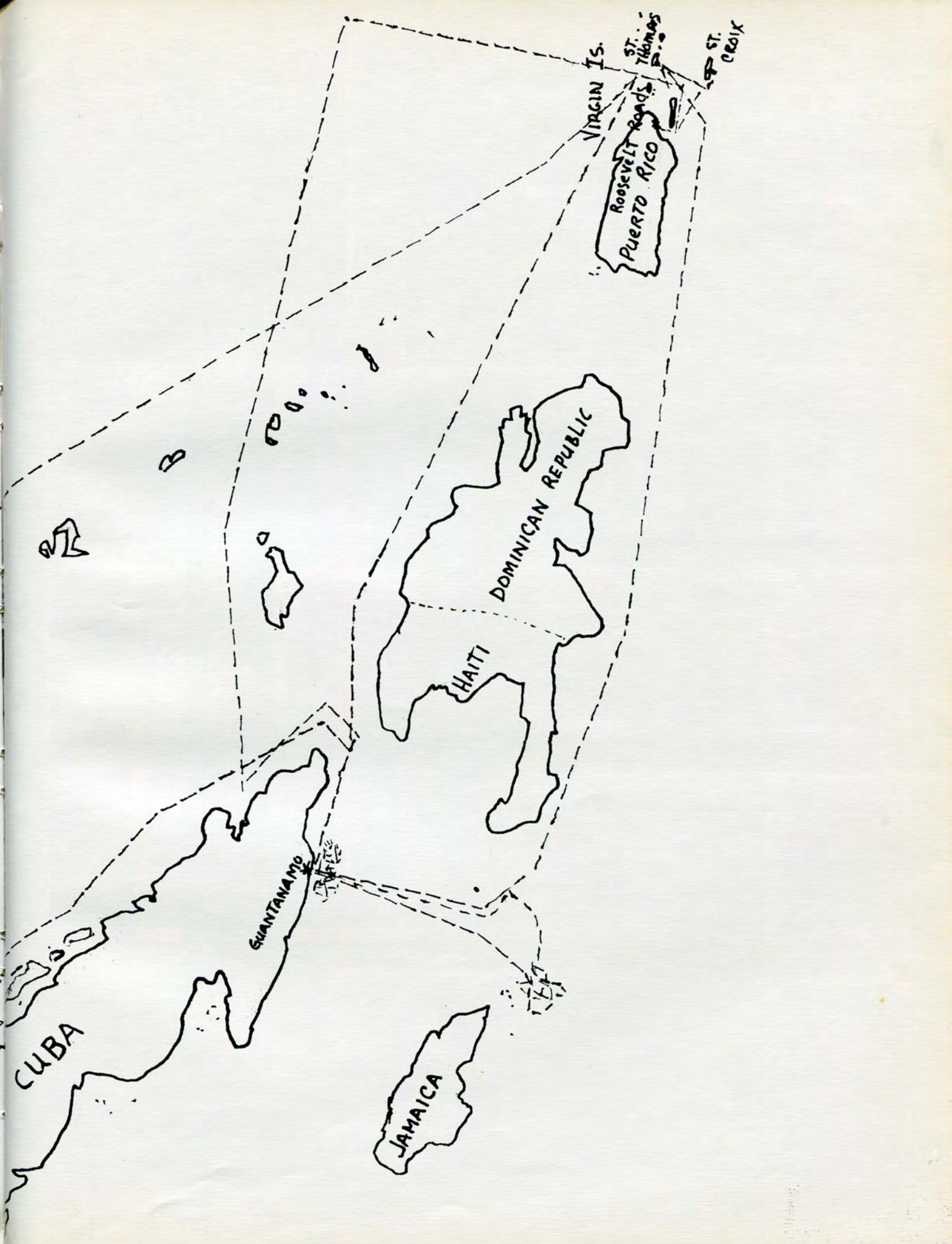
Round about the cauldron go;
In the poison'd entrails throw
Double, double toil and trouble;
Fire burn, and cauldron bubble.

Shakespeare



Use two page view to see full map.





CUBA

B

QUANTANAMO

JAMAICA

HAITI

DOMINICAN REPUBLIC

VIRGIN IS.

Roosevelt Roads
Puerto Rico

ST. THOMAS
ST. JOHN

ST. CROIX

NAVIGATION

DIVISION



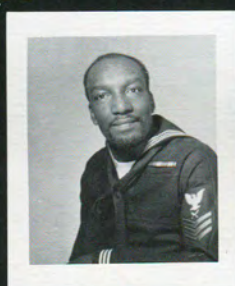
LTJG P. MATTICE
NAVIGATOR



QM1 W. Bond



HM1 E. Murray



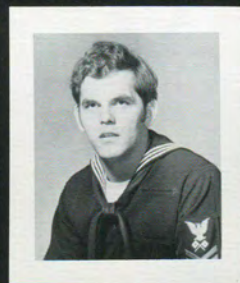
YN1 A. Jones



PN1 C. Lewis



QM2 J. Corrigan



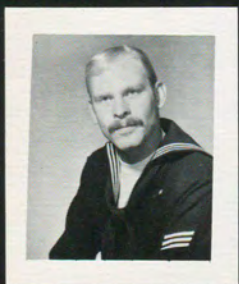
QM2 W. Edney



QM2 P. Klaus



YN2 R. Hudson



SN M. Staff



QMSN W. Zampino



QMSN J. Taylor

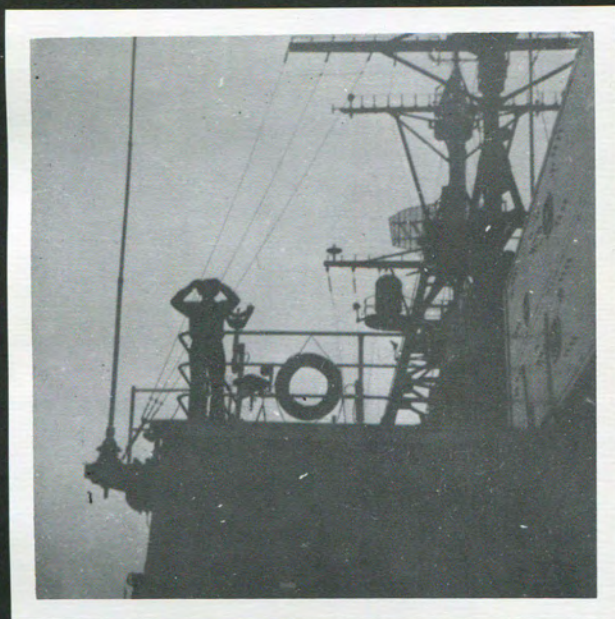


PNSN D. Garcia

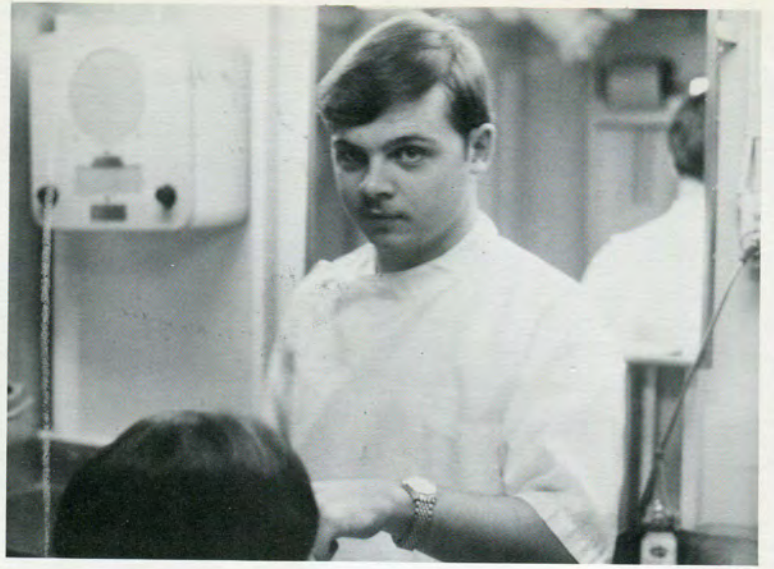


SA E. Cahill

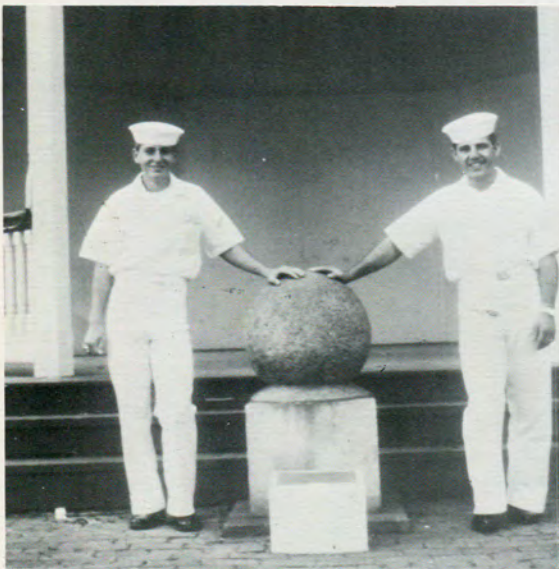
REFLECTIONS REFLECTIONS

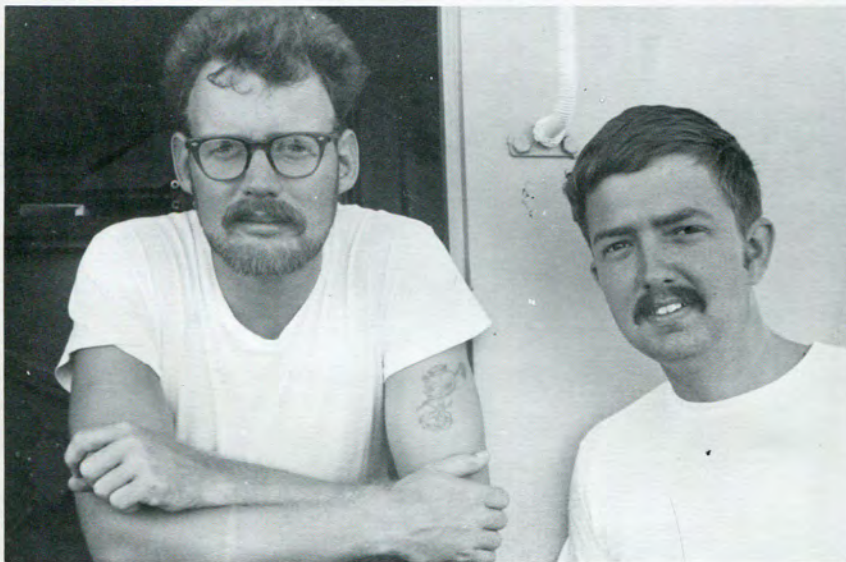
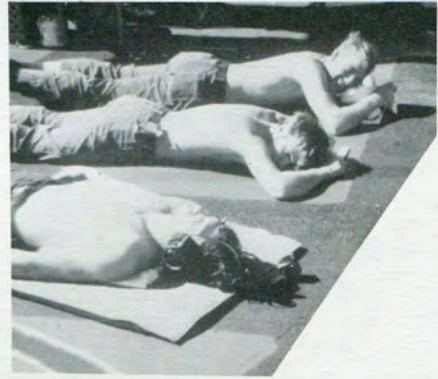


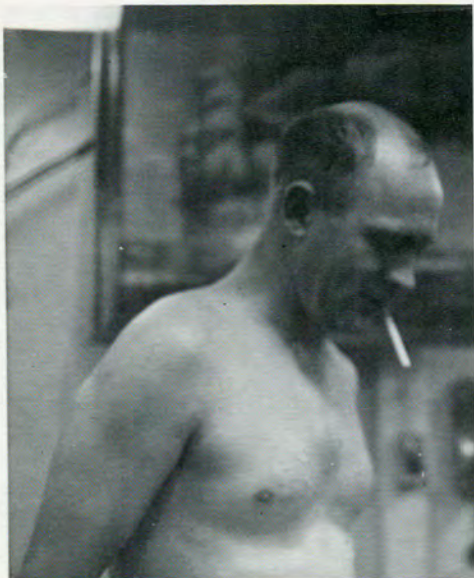
THE FIRST YEAR ON BLANDY
WAS A COMPOSITE OF MANY THINGS . . .

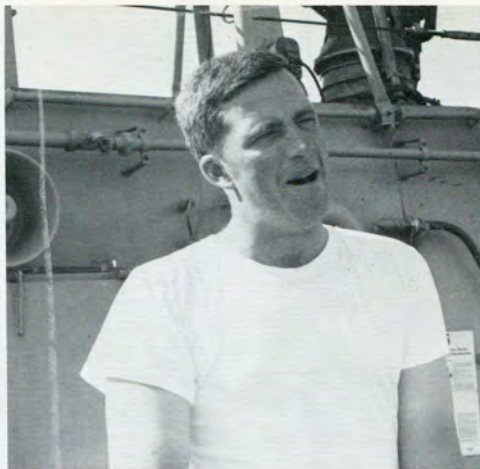


THE MEN





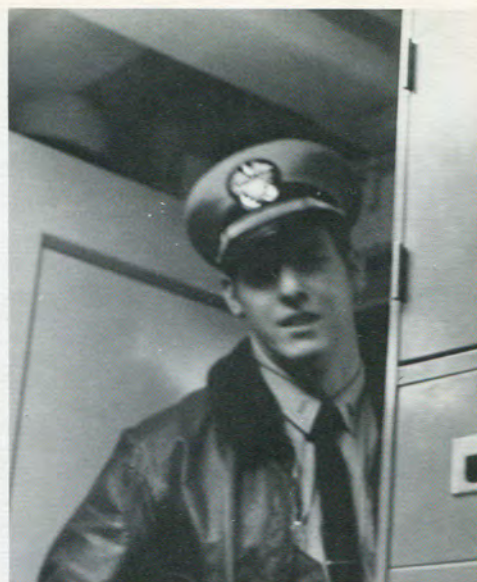












THE OFFICERS









THE SIGHTS . . .



FRIENDLY PORTS . . .





HOME



PORT

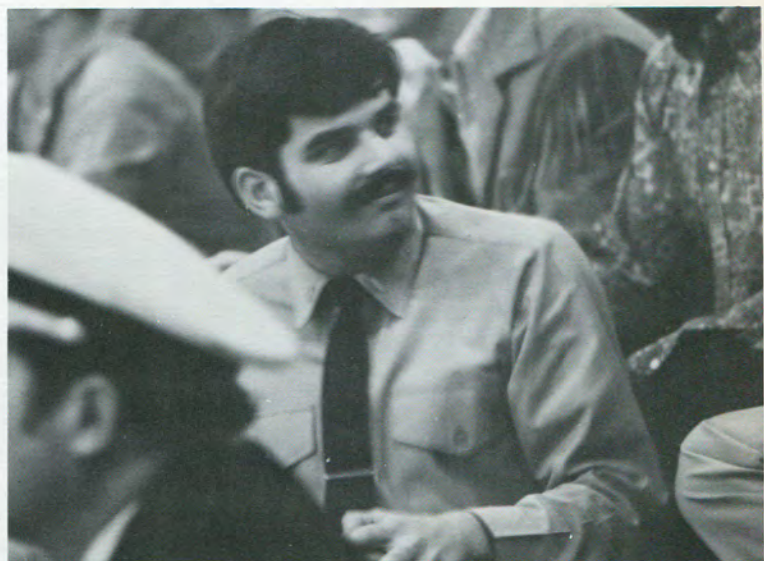


FRIENDLY NATIVES...





THE
BASKETBALL
COURT...







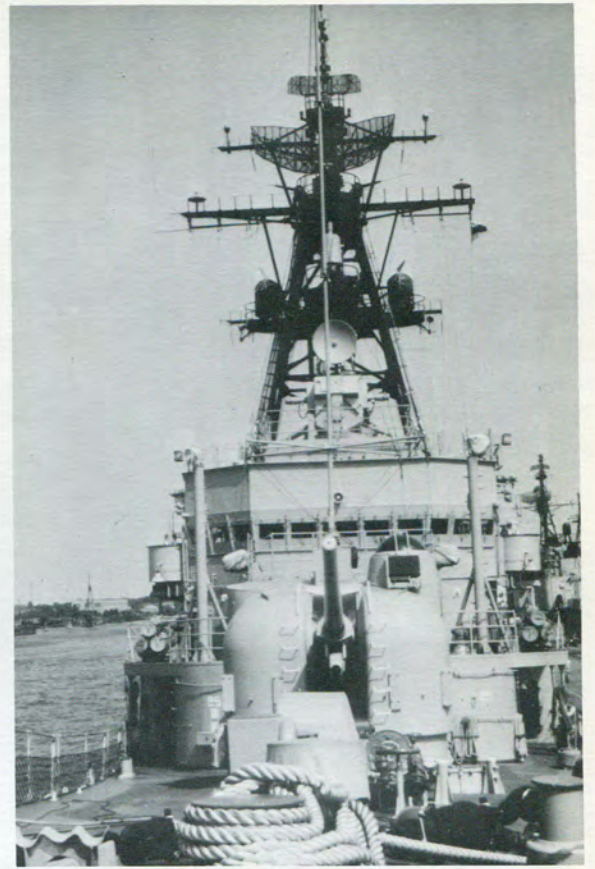
CHAMPS - CRUDESANT NORFOLK

GO
BIG
TEAM



...AND, OF COURSE, REFLECTIONS OF
THE SHIP HERSELF





THE ADMIRAL SPEAKS

EXCERPTS FROM Z-57

FM CNO (Z-57)
TO NAVOP
BT

UNCLAS

DEMEANING OR ABRASIVE REGULATIONS; ELIMINATION OF
1. THOSE DEMEANING OR ABRASIVE REGULATIONS GENERALLY REFERRED TO IN THE FLEET AS "MICKEY MOUSE" OR "CHICKEN" REGS HAVE, IN MY JUDGEMENT, DONE ALMOST AS MUCH TO CAUSE DISSATISFACTION AMONG OUR PERSONNEL AS HAVE EXTENDED FAMILY SEPARATION AND LOW PAY SCALES

A. I VIEW THE PROHIBITION AGAINST THE WEARING OF CLEAN, NEAT WORKING UNIFORMS OR DUNGAREES TO AND FROM WORK AS UNWARRANTED AND I NOW DIRECT THAT IT BE SUSPENDED FOR THE CONVENIENCE OF ALL CONCERNED.

B. OVERNIGHT LIBERTY WILL NOT BE TREATED AS A PRIVILEGE FOR WHICH A SPECIAL REQUEST CHIT MUST BE SUBMITTED, BUT RATHER AS THE NORMAL FORM OF LIBERTY FOR OUR RESPONSIBLE SAILORS

C. I AM NOT SUGGESTING THAT A MORE LENIENT ATTITUDE TOWARD IRRESPONSIBLE BEHAVIOR BE ADOPTED, BUT I DO BELIEVE THAT WE CANNOT PERMIT GENERAL POLICIES TO BE DICTATED BY THE NEED, WHICH I SUPPORT, TO CONSTRAIN THOSE FEW INDIVIDUALS WHO DO NOT RESPOND TO THE TRUST AND CONFIDENCE EXPRESSED IN MORE FLEXIBLE AND LESS RESTRICTIVE REGULATIONS.

E.R. ZUMWALT, JR., ADMIRAL, U.S. NAVY, CHIEF OF NAVAL OPERATIONS

EXCERPTS FROM Z-68

FM CNO (Z-68)
TO NAVOP
BT

UNCLAS

A. IN VIEW OF THE ENTHUSIASTIC RESPONSE TO PILOT PROGRAM AUTHORIZING FIRST CLASS PETTY OFFICERS TO MAINTAIN CIVILIAN CLOTHES ABOARD SHIP FOR WEARING ASHORE ON LEAVE AND LIBERTY, THIS PRIVILEGE IS HEREBY EXTENDED TO ALL PETTY OFFICERS ON ALL SHIPS. RECOGNIZING THAT GUIDANCE CANNOT BE PROVIDED TO MEET ALL LOCAL CONDITIONS, THE FOLLOWING EXAMPLES ARE PROVIDED FOR GUIDANCE OF COMMANDING OFFICERS IN DETERMINING APPROPRIATE ATTIRE:

COAT AND TROUSERS; TURTLENECK; SHIRT WITH TIE, ASCOT, OR OPEN COLLAR. SPORTS SHIRTS, INCLUDING BUTTON-DOWNS, SWEATER, CREW OR V-NECK SHIRTS SOLD AS AN OUTER GARMENT.

OVERCOATS, JACKETS AND WINDBREAKERS.

LEVIS, "PERMA PRESS", AND BELL BOTTOM TROUSERS OF VARIOUS COLORS AND MATERIALS.

WELL KEPT SHOES AND BOOTS OF VARIOUS COLORS, MATERIALS AND STYLES.

E.R. ZUMWALT, JR., ADMIRAL, U.S. NAVY, CHIEF OF NAVAL OPERATIONS

HAIR



FM CNO (Z-70)
TO NAVOP
BT

UNCLAS
GROOMING AND UNIFORM POLICY

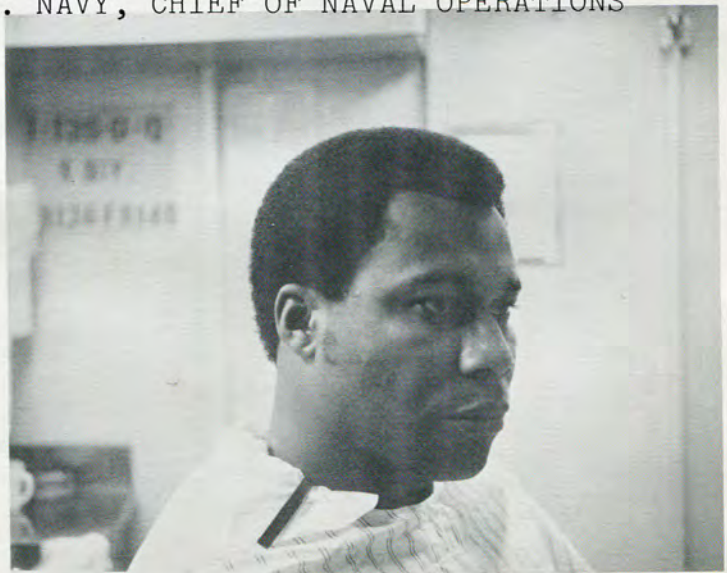
A. HAIR GROOMING: THE NAVY DOES NOT PRESCRIBE NOR DISTINGUISH AMONG STYLES OF HAIRCUTS. A WIDE VARIETY OF HAIR STYLES, IF MAINTAINED IN A NEAT MANNER, IS ACCEPTABLE. THE DETERMINATION OF HAIR STYLES, WITHIN THE THE CRITERIA DETAILED BELOW, IS AN INDIVIDUAL DECISION.

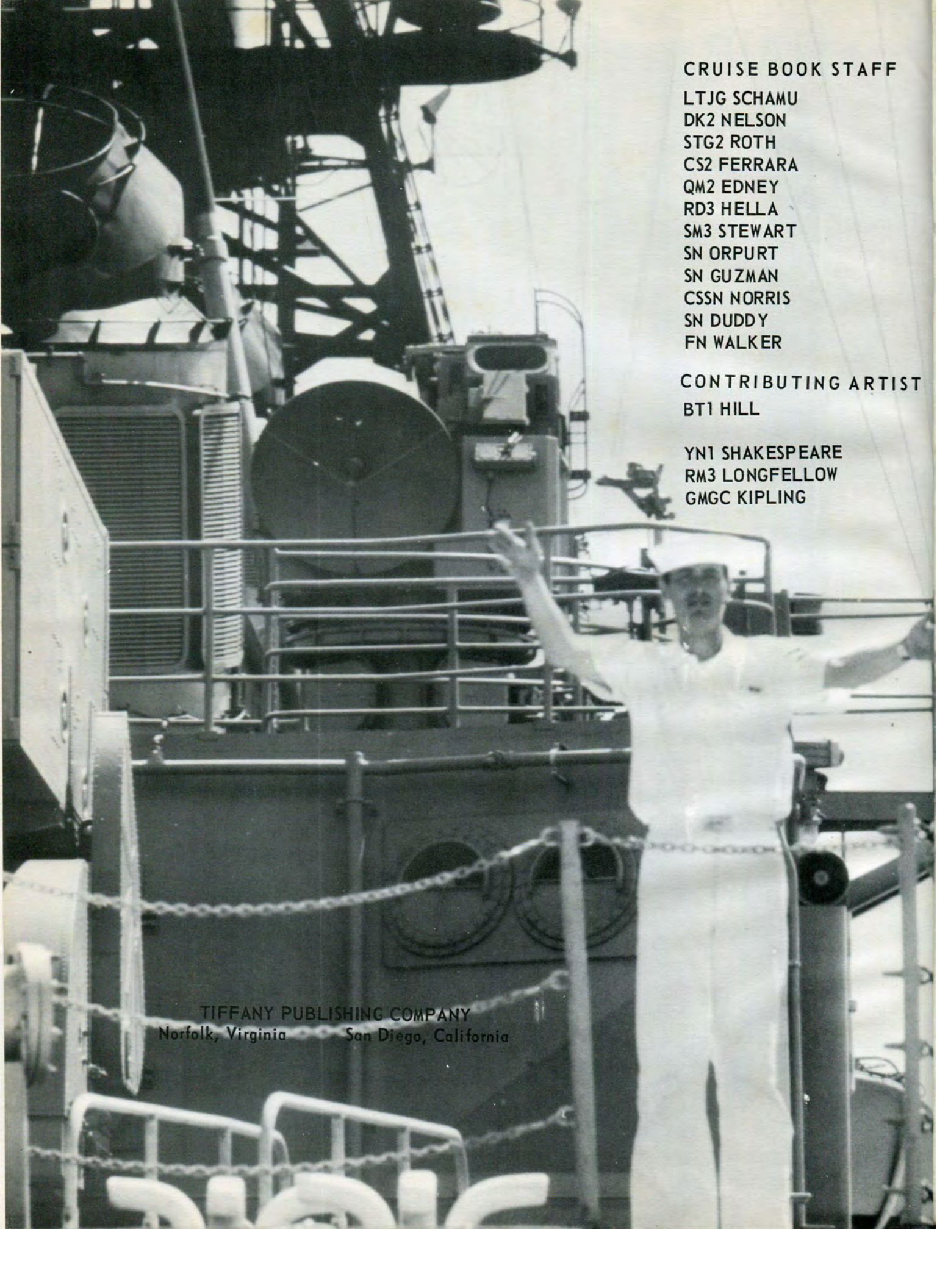
(1) HAIR WILL BE NEAT, CLEAN, TRIMMED, AND PRESENT A GROOMED APPEARANCE. HAIR WILL NOT TOUCH THE COLLAR EXCEPT FOR THE CLOSELY CUT HAIR AT THE BACK OF THE NECK AND THAT WILL PRESENT A TAPERED APPEARANCE. HAIR IN FRONT WILL BE GROOMED SO THAT IT DOES NOT FALL BELOW THE EYEBROWS WHEN A PERSON IS UNCOVERED AND IT WILL NOT BUSH OUT BELOW THE BAND OF PROPERLY WORN HEADGEAR. IN NO CASE SHALL THE BULK OR LENGTH OF HAIR INTERFERE WITH THE PROPER WEARING OF ANY MILITARY HEADGEAR. THE EXACT MAXIMUM LENGTH OF THE HAIR IS NO LONGER SPECIFIED.

(2) IF AN INDIVIDUAL CHOOSES TO WEAR SIDEBURNS, THEY WILL BE NEATLY TRIMMED. SIDEBURNS WILL NOT EXTEND BELOW THE BOTTOM OF THE EARLOBE, WILL BE OF EVEN WIDTH (NOT FLARED), AND WILL END WITH A CLEAN-SHAVEN HORIZONTAL LINE.

(3) IF A BEARD OR MOUSTACHE IS WORN, IT SHALL BE WELL GROOMED AND NEATLY TRIMMED IN ORDER NOT TO CONTRIBUTE TO A RAGGED APPEARANCE. THIS POLICY AUTHORIZES AND INCLUDES FULL AND PARTIAL BEARDS, VAN DYKES, AND GOATEES.

E.R. ZUMWALT, JR., ADMIRAL, U.S. NAVY, CHIEF OF NAVAL OPERATIONS





CRUISE BOOK STAFF

LTJG SCHAMU

DK2 NELSON

STG2 ROTH

CS2 FERRARA

QM2 EDNEY

RD3 HELLA

SM3 STEWART

SN ORPURT

SN GUZMAN

CSSN NORRIS

SN DUDDY

FN WALKER

CONTRIBUTING ARTIST

BT1 HILL

YN1 SHAKESPEARE

RM3 LONGFELLOW

GMGC KIPLING

TIFFANY PUBLISHING COMPANY
Norfolk, Virginia San Diego, California



"To seamen, a ship becomes endowed with human virtues and human faults; she ceases to be a mere inanimate thing." But, remember that man has endowed her with these qualities. That is why "Men Fight, not ships!"

... Admiral Gleaves, USN



Scanned by James Jossman. j.jossman at comcast dot net.

I was a second class Machinist Mate in R Division working with refrigeration and air conditioning.

I served on the Blandy 01/1970 - 12/1971.

This Project is in memory of my shipmate and friend John G. Thompson, IC1.

"Farmer John", you are not forgotten.

February, 2012.